

AGREEMENT No. [•]/[•]

**EXHIBIT A – SCHEDULE OF RESPONSIBILITIES FOR WORKS**

**INTERNATIONAL PUBLIC TENDER N° 001/2026**

**STATE OF MINAS GERAIS**

## INDEX

1. GENERAL GUIDELINES FOR THE CONCESSIONAIRE'S OBLIGATIONS .....	3
2. GENERAL PROVISIONS ON EXECUTION SCHEDULES .....	6
3. ARCHITECTURE AND ENGINEERING TECHNICAL DOCUMENTS .....	12
4. TEMPORARY STRUCTURES .....	19
5. WORKS EXECUTION REPORT .....	21
6. PREPARATION, SUBMISSION, AND APPROVAL OF ARCHITECTURE AND ENGINEERING TECHNICAL DOCUMENTS .....	22
7. LICENSES AND AUTHORIZATIONS .....	26
8. PROJECT AND CONSTRUCTION OBLIGATIONS .....	27
9. HANDOVER OF THE WORKS .....	47
10. PROGRAM OF REQUIREMENTS .....	50
11. RELOCATION SCENARIOS AND TEMPORARY OPERATION OF EDUCATIONAL UNITS DURING THE EXECUTION OF WORKS .....	70
12. ASSISTED OPERATION .....	77
13. APPENDIX .....	80

## 1. GENERAL GUIDELINES FOR THE CONCESSIONAIRE'S OBLIGATIONS

- 1.1. This document defines the guidelines and obligations related to the renovation and refurbishment of the EDUCATIONAL UNITS to be fulfilled by the CONCESSIONAIRE, and shall also apply, when applicable, to EXPANSIONS and the construction of new units, when they are requested as CONTINGENT INVESTMENTS, as regulated in the AGREEMENT.
- 1.2. In omitted cases, the CONCESSIONAIRE shall request guidance from the GRANTING AUTHORITY.
- 1.3. Throughout the CONCESSION TERM, the CONCESSIONAIRE shall comply with all minimum and specific requirements set forth in this SCHEDULE OF RESPONSIBILITIES FOR WORKS.
- 1.4. The GRANTING AUTHORITY may, at any time, upon verifying that the CONCESSIONAIRE has failed to comply with the obligations established in this document, expressly require that the relevant adjustments and corrections be carried out, without prejudice to the application of penalties, if applicable, in accordance with the AGREEMENT and EXHIBIT I – PENALTIES.
- 1.5. The execution of the necessary works is the sole and exclusive responsibility of the CONCESSIONAIRE, as well as ensuring that such works and the operation of the EDUCATIONAL UNITS strictly comply with the minimum specifications established in the TENDER DOCUMENT, the AGREEMENT and its EXHIBITS, this SCHEDULE OF RESPONSIBILITIES FOR WORKS, and the applicable legislation, in particular:
  - i. Federal Law No. 10,098/2000 – Provides for general standards and basic criteria for promoting accessibility for persons with disabilities or reduced mobility;
  - ii. Federal Law No. 13,005/2014 – Approves the National Education Plan (PNE), establishing goals and strategies for the ten-year period;
  - iii. Federal Law No. 13,146/2015 – Statute of Persons with Disabilities;
  - iv. Federal Decree No. 5,296/2004 – Regulates Federal Law No. 10,098/2000, addressing accessibility in buildings and transportation;
  - v. Federal Law No. 9,795/1999 – Provides for environmental education and establishes the National Environmental Education Policy;
  - vi. Federal Supplementary Law No. 140/2011 – Establishes rules for

**PROCESS No. 1260.01.0235354/2025-76**  
**INTERNATIONAL TENDER No. 001/2026**  
**SCHOOL INFRASTRUCTURE PPP**

- cooperation among federal entities in environmental protection;
- vii. ABNT standards, especially NBR 9050 (accessibility), NBR 15575 (building performance), NBR 5410 (low-voltage electrical installations), among other applicable standards;
  - viii. Technical Instructions issued by the Minas Gerais Military Fire Department (Corpo de Bombeiros Militar de Minas Gerais – CBMMG), especially with regard to obtaining the Fire Department Inspection Certificate (Auto de Vistoria do Corpo de Bombeiros – AVCB) or the Fire Department License Certificate (Certificado de Licença do Corpo de Bombeiros – CLCB);
  - ix. State Law No. 14,130/2001 – Cultural Heritage Protection Code of the State of Minas Gerais;
  - x. State Law No. 18,030/2009 – Provides for the State Education Plan of Minas Gerais;
  - xi. State Decree No. 44,844/2008 – Regulates the environmental licensing process within the scope of the State Environmental System (SISEMA);
  - xii. COPAM Normative Resolution No. 217/2017 – Establishes criteria for simplified environmental licensing in the State of Minas Gerais;
  - xiii. Municipal Organic Laws and Building and Construction Codes of the municipalities where the EDUCATIONAL UNITS are located;
  - xiv. Municipal Master Plans, when applicable, especially in cases involving reclassification of land use and occupation;
  - xv. Rules and resolutions issued by the Minas Gerais State Secretariat of Education (SEE/MG) applicable to school infrastructure and sanitary safety;
  - xvi. Recommendations issued by State and Municipal Health Surveillance authorities, in accordance with applicable legislation and technical guidelines of ANVISA;
  - xvii. Other federal, state, and municipal legislation that may apply to the execution of works and the operation of the EDUCATIONAL UNITS in the State of Minas Gerais.

**1.6.** The CONCESSIONAIRE shall carry out all construction obligations and provide, either directly or through subcontracting, all human resources, items, materials, equipment, and supplies necessary for the fulfillment of the contractual object, in accordance with the provisions of the AGREEMENT regarding subcontracting.

- 1.7.** The activities of the CONCESSION shall comply with the guidelines established by Municipal and State Public Administration bodies, within the exercise of their regulatory authority and police power.
- 1.8.** References in this EXHIBIT to technical standards and legislation include all their amendments, replacements, consolidations, and respective supplements, unless expressly stated otherwise.
- 1.9.** The projects, works, and services to be carried out shall ensure architectural and communicational accessibility for persons with disabilities or reduced mobility, in accordance with the requirements of this EXHIBIT.
- 1.10.** The EDUCATIONAL UNITS construction works shall comply with habitability parameters (watertightness, thermal performance, lighting performance, acoustic performance, and ventilation and air circulation performance) set forth in the applicable standards listed in this EXHIBIT, in addition to the specifications established in this SCHEDULE OF RESPONSIBILITIES FOR WORKS.
- 1.11.** The CONCESSIONAIRE bears full responsibility for compliance with the obligations set forth in this EXHIBIT, regardless of whether their execution is carried out directly or through subcontracting.
- 1.12.** Throughout the CONCESSION, the CONCESSIONAIRE shall contribute to ensuring that the EDUCATIONAL UNITS fulfill their vocation as spaces dedicated to the promotion of comprehensive, democratic, emancipatory, humanizing education with social quality, working in coordination with the GRANTING AUTHORITY to promote education, culture, sports, leisure, recreation, and technologies, and fostering the full development of the human being as a person, citizen, and subject of their own history, without prejudice to the other material obligations provided for in the AGREEMENT.
- 1.13.** Whenever possible, the CONCESSIONAIRE shall make use of actions that promote sustainability, social participation and inclusion, and respect for minorities and vulnerable social groups, seeking through such actions to generate positive externalities that go beyond the perimeter of the EDUCATIONAL UNITS, without prejudice to the other material obligations as provided in the AGREEMENT.

**1.14.** The works inherent to the execution of this EXHIBIT shall cause the minimum possible negative interference to their surroundings and neighboring areas.

**1.15.** The CONCESSIONAIRE shall provide information to the GRANTING AUTHORITY through periodic reports for review and audit purposes, in order to ensure transparency in the management of the CONCESSION and compliance with the AGREEMENT. Such reports include, but are not limited to, the Works Execution Reports, the content of which is described in the corresponding sections of this EXHIBIT A – SCHEDULE OF RESPONSIBILITIES FOR WORKS.

## **2. GENERAL PROVISIONS ON EXECUTION SCHEDULES**

**2.1.** In order to ensure proper planning and control of the execution of the renovations of the EDUCATIONAL UNITS covered by the Program, the CONCESSIONAIRE shall prepare and keep updated two mandatory scheduling instruments, namely:

**2.1.1.** MACRO IMPLEMENTATION SCHEDULE, whose purpose is to represent, in a consolidated manner, the major phases required for the execution of the renovations provided for in the contractual scope, including the final deadline for completion of the renovations;

**2.1.2.** WORKS IMPLEMENTATION PLAN, which consists of a detailed schedule per EDUCATIONAL UNIT, covering the technical, operational, and logistical specificities of each intervention, as well as the construction sequence and the interfaces required for the execution of the activities.

**2.2.** Both instruments shall be coordinated with the other plans contractually required and submitted for approval by the GRANTING AUTHORITY, with the support of the INDEPENDENT VERIFIER in the case of the MACRO IMPLEMENTATION SCHEDULE, in accordance with the guidelines of this EXHIBIT and the contractual deadlines.

### **2.3. MACRO IMPLEMENTATION SCHEDULE**

**2.4.** The CONCESSIONAIRE shall submit the MACRO IMPLEMENTATION SCHEDULE, consolidating the major phases planned for the execution of the interventions and the final deadline for completion of the renovations, as a condition for the effectiveness of the AGREEMENT, pursuant to the applicable provisions. Such schedule shall cover all EDUCATIONAL UNITS included in the Program and

shall primarily contain the order and any grouping into construction phases, for approval by the GRANTING AUTHORITY, observing the contractual scope, the maximum deadlines defined, the possible need to include the ASSIGNED EDUCATIONAL UNITS in the last group of EDUCATIONAL UNITS to be renovated, the advisability of including, in the second group of schools to be renovated, the EDUCATIONAL UNITS eligible for EXPANSION as CONTINGENT INVESTMENTS, listed in item 1 of APPENDIX V – MAPPING OF EDUCATIONAL UNITS ELIGIBLE FOR CONTINGENT INVESTMENT, and the other guidelines set forth in this EXHIBIT.

**2.5.** The MACRO IMPLEMENTATION SCHEDULE shall indicate the duration of each of the following stages for each of the EDUCATIONAL UNITS:

**2.5.1.** PRE-WORKS STAGE: consists of the execution of all preliminary services that precede the execution of the works and are mandatory for the start of the next stage, such as the approval of all ARCHITECTURE AND ENGINEERING TECHNICAL DOCUMENTS.

**2.5.1.1.** The Schedule shall: (i) specify the start dates for the preparation of the designs for each EDUCATIONAL UNIT; (ii) detail the actions to be carried out to obtain and approve all ARCHITECTURE AND ENGINEERING TECHNICAL DOCUMENTS; and (iii) estimate the deadlines for completion of this stage.

**2.5.2.** ASSISTED OPERATION: Consists of monitoring the provision of the SERVICES under the AGREEMENT by the GRANTING AUTHORITY, aiming at a full understanding of the current operation of the EDUCATIONAL UNITS in order to better prepare for the future transition to operation by the CONCESSIONAIRE. It shall be carried out partly during the same period as the PRE-WORKS STAGE, within a timeframe established by the CONCESSIONAIRE.

**2.5.3.** WORKS STAGE: consists of the execution of all services necessary to achieve the assembly and mobilization of the TEMPORARY STRUCTURES and the works of the EDUCATIONAL UNITS;

**2.5.3.1.** The Schedule shall indicate the works to be carried out in the EDUCATIONAL UNITS, considering their respective typologies indicated in item 10.3.

**2.5.4.** HANDOVER OF THE WORKS: consists of the commissioning of all systems, the demobilization of the construction site and the TEMPORARY STRUCTURES,

site cleaning, and the supply and installation of all furniture and equipment for the proper functioning of the activities of the EDUCATIONAL UNITS.

**2.6.** The CONCESSIONAIRE shall update the MACRO IMPLEMENTATION SCHEDULE whenever adjustments are required, submitting it to the review of the GRANTING AUTHORITY, which shall raise any objections within a maximum period of 10 (ten) days.

**2.6.1.** The CONCESSIONAIRE shall update the MACRO IMPLEMENTATION SCHEDULE whenever adjustments are required, submitting it to the review of the GRANTING AUTHORITY, which shall raise any objections within a maximum period of 10 (ten) days.

**2.7. PRE-WORKS STAGE:** encompasses the following activities and procedures:

- i. Preparation of the Preliminary Architectural Study (EP-ARQ) and the BASIC DESIGNS, with their respective review and approval by the GRANTING AUTHORITY, with the support of the INDEPENDENT VERIFIER, as applicable;
- ii. Preparation of the complementary designs required to initiate administrative procedures related to permits, authorizations, and environmental and urban licenses, and their respective approvals;
- iii. Preparation of the WORKS IMPLEMENTATION PLAN and its respective approval by the GRANTING AUTHORITY, with the support of the INDEPENDENT VERIFIER;
- iv. Preparation of the DETAILED DESIGNS (PE-ARQ) and their respective approval by the GRANTING AUTHORITY, with the support of the INDEPENDENT VERIFIER;
- v. Preparation of the Furniture and Equipment Plan (PME-ARQ) and the Signage and Visual Communication Plan (CV-ARQ), with their respective review and approval by the GRANTING AUTHORITY; and
- vi. Other relevant procedures and necessary activities for the commencement of the works.

**2.7.1.** As a means of expediting the process for the commencement of the works, at this same stage it is recommended that, where applicable, the following services for preparation of the construction areas be initiated:

- i. Fencing lots and/or areas related to the works;

- i. Surface cleaning of the sites;
- ii. Execution of temporary utility connections or reconnection with the water and electricity utilities;
- iii. Installation of construction sites;
- iv. Execution of demolitions and removals;
- v. Execution of tree management; and
- vi. Execution of earthmoving services on the sites.

**2.7.2.** It is further recommended that the DETAILED DESIGNS (PE-ARQ) and Complementary Designs be initiated, where applicable, concurrently with the process of obtaining permits, authorizations, and environmental and urban licenses, as well as other authorizations that constitute DOCUMENTATION FOR LICENSING.

**2.8.** The CONCESSIONAIRE shall submit, within up to 30 (thirty) days after the issuance of the ORDER TO COMMENCE THE AGREEMENT, which period may be amended by agreement between the PARTIES, the WORKS IMPLEMENTATION PLAN, which consists of planning with the presentation of data and elements related to the works, including the execution schedules of all service milestones, and which shall be consistent with the MACRO IMPLEMENTATION SCHEDULE.

**2.8.1.** The WORKS IMPLEMENTATION PLAN shall present the entire planning of the renovation and refurbishment process of the EDUCATIONAL UNIT, including:

- i. the stages for submission and approval of the ARCHITECTURE AND ENGINEERING TECHNICAL DOCUMENTS, as regulated in item 3;
- ii. the other elements of the PRE-WORKS STAGE;
- iii. a detailed schedule for the CONSTRUCTION STAGE;
- iv. as detailed in item 11, in the RELOCATION SCENARIO With SHARED or DEDICATED TEMPORARY STRUCTURE, the indication of the required period and the Transfer Plan for the EDUCATIONAL COMMUNITY to the TEMPORARY STRUCTURES and their return after completion of the works;
- v. in the RELOCATION SCENARIO WITH PARTIAL TEMPORARY STRUCTURE, the indication of the required periods and the RELOCATION Plan for the Furniture and Equipment and the EDUCATIONAL COMMUNITY of each environment of the EDUCATIONAL UNIT to be renovated to the Partial TEMPORARY

STRUCTURE, and the return to the original environment after renovation;

- vi. in the INTERNAL RELOCATION SCENARIO, the indication of the required periods and the Internal RELOCATION PLAN for the Furniture and Equipment and the EDUCATIONAL COMMUNITY of each environment of the EDUCATIONAL UNIT to be renovated, to another temporary internal environment, and the return to the original environment after renovation;
- vii. HANDOVER OF THE WORKS, that is, from the ORDER TO COMMENCE THE AGREEMENT through the issuance of the FINAL ACCEPTANCE, including deadlines for obtaining permits, authorizations, and licenses required for the issuance of the PROVISIONAL ACCEPTANCE or FINAL ACCEPTANCE, as applicable, considering the specificities of each EDUCATIONAL UNIT.

**2.8.2.** The WORKS IMPLEMENTATION PLAN for each EDUCATIONAL UNIT shall indicate the timeframe and period for carrying out activities, including, but not limited to, those related to: (i) mobilization of infrastructure and construction site for the works; (ii) inspections, interventions, construction or execution of foundations; (iii) renovations, demolitions, and construction of masonry; (iv) renovation or construction of installations; (v) refurbishment or installation of finishes, thresholds, window sills, and frames; (vi) interventions or installation of roofing systems; (vii) refurbishment or installation of paving, railings, walls, and fencing; (viii) execution of mortars, roughcasting, and painting; (ix) installation of furniture; (x) installation of signage and pre- and post-construction communication elements; (xi) cleaning and finishing works; and (xii) inspection and delivery of the works.

**2.8.3.** The WORKS IMPLEMENTATION PLAN shall be made available on the CONCESSIONAIRE's official website, accessible via the internet.

**2.9.** Within the WORKS STAGE, the following services shall be provided :

- i. Earthworks (excavation, cutting, backfilling, etc.), as applicable;
- ii. Rehabilitation of concrete and steel structures;
- iii. Execution of waterproofing works;
- iv. Execution of enclosures (masonry, concrete panels for closures, etc.);
- v. Renovation or supply and installation of frames, glazing, and ceilings;

**PROCESS No. 1260.01.0235354/2025-76**  
**INTERNATIONAL TENDER No. 001/2026**  
**SCHOOL INFRASTRUCTURE PPP**

- vi. Renovation or supply and installation of roofing systems, including repairs or replacement of the supporting framework, if necessary;
- vii. Renovation and execution of building infrastructure installations (electrical installations, substation/energy intake installations, electronic systems, plumbing and sanitary installations, stormwater drainage, air conditioning, fire protection, fire detection and alarm systems, Lightning Protection System (SPDA), structured cabling, telephony, data networks, CCTV, etc.);
- viii. Renovation and execution of finishes (internal and external);
- ix. Supply and installation of partitions;
- x. Execution of painting works (internal and external);
- xi. Renovation and execution of paving, urbanization, landscaping, drainage, and walling, as applicable;
- xii. Mobilization of the TEMPORARY STRUCTURES;
- xiii. Local administration of the works;
- xiv. Acquisition of furniture and equipment and their installation in all environments of the EDUCATIONAL UNITS, observing the REFERENCE FURNITURE AND EQUIPMENT PLAN and in accordance with the Furniture and Equipment Plan (PME-ARQ), after due approval by the GRANTING AUTHORITY; and
- xv. Installation of equipment;

**2.10.** Within the HANDOVER OF THE WORKS stage, the following services shall be provided:

- i. Execution of commissioning activities (testing of all installed systems);
- ii. Demobilization of the TEMPORARY STRUCTURES;
- iii. Demobilization of the construction site; and
- iv. Execution of post-construction cleaning, including the removal of debris with disposal at authorized public facilities.

**2.11.** The maximum period for full completion of the RENOVATION PHASE, including the demobilization of the TEMPORARY STRUCTURES and the renovation of the spaces where the TEMPORARY STRUCTURES were installed, for all EDUCATIONAL UNITS, regardless of typology, counted from the completion of the issuance of the first ORDER TO COMMENCE THE AGREEMENT, shall be 23

(twenty-three) months for SUBLOT 1, 38 (thirty-eight) months for SUBLOT 2, and 49 (forty-nine) months for the GLOBAL LOT.

**2.12.** In addition to the maximum duration of the RENOVATION PHASE, the CONCESSIONAIRE shall carry out the HANDOVER OF THE WORKS of a defined number of EDUCATIONAL UNITS per period, counted from the completion of the MACRO IMPLEMENTATION SCHEDULE STAGE and the issuance of the first ORDER TO COMMENCE THE AGREEMENT:

**2.12.1.** SUBLOT 1: within a period of 15 (fifteen) months, at least 20 (twenty) units;

**2.12.2.** SUBLOT 2: within a period of 15 (fifteen) months, at least 20 (twenty) units; and within a period of 26 (twenty-six) months, at least 40 (forty) units;

**2.12.3.** GLOBAL LOT: within a period of 15 (fifteen) months, at least 20 (twenty) units; within a period of 26 (twenty-six) months, at least 40 (forty) units; and within a period of 39 (thirty-nine) months, at least 60 (sixty) units.

**2.13.** The CONCESSIONAIRE may advance the works by submitting a proposal and planning of the MACRO IMPLEMENTATION SCHEDULE to the GRANTING AUTHORITY, which shall assess its relevance and express its agreement through approval of the MACRO IMPLEMENTATION SCHEDULE.

**2.14.** Any delay (i) in the deadline established for execution of the RENOVATION PHASE, item 2.11; (ii) in the individual deadlines established in the approved MACRO IMPLEMENTATION SCHEDULE for completion of the works of each EDUCATIONAL UNIT; or (iii) in meeting the unit delivery quantities within the deadlines set forth in item 2.12, may result in the application of a fine as provided in EXHIBIT I – PENALTIES, except where caused by the GRANTING AUTHORITY.

### **3. ARCHITECTURE AND ENGINEERING TECHNICAL DOCUMENTS**

**3.1.** This item defines the minimum content and preparation guidelines for the ARCHITECTURE AND ENGINEERING TECHNICAL DOCUMENTS to be prepared by the CONCESSIONAIRE.

**3.1.1.** The Technical Documents set forth in this item shall be delivered by the CONCESSIONAIRE to the GRANTING AUTHORITY in digital media, in editable format, such as .doc, .dwg, .ifc, and .rvt, as well as in .pdf version, or in another form previously agreed between the parties.

**3.2. Building Information Modeling (BIM) shall be used for:**

- i. the preparation of architectural models and engineering models for the following disciplines: structures; plumbing installations; HVAC systems; and electrical installations;
- ii. the detection of physical and functional clashes among the various disciplines and the review of architecture and engineering models in order to coordinate them with one another;
- iii. the extraction of quantities;
- iv. the generation of graphic documentation extracted from the models referred to in this subitem;
- v. cost estimating, planning, and control of works execution;
- vi. updating the designs of the EDUCATIONAL UNIT and their as-built information (“As Built”), including subsequent maintenance activities and any further updates to the “As Built” that may be required; and
- vii. after completion of the RENOVATION PHASE, the management and maintenance of the EDUCATIONAL UNITS.

**3.2.1.** For compliance with the provisions of item 3.2, the relevant technical standards shall be observed, such as ABNT NBR 15965 (Construction information classification system), as well as best practices for the execution of workflows using BIM.

**3.2.2.** The CONCESSIONAIRE may, at its discretion, implement and use BIM to carry out complementary activities and processes, such as simulations aimed at assessing energy efficiency, energy consumption, and the carbon footprint of the works and buildings, as well as the suitability and optimization of the thermal, acoustic, and lighting performance of the environments.

**3.3. The ARCHITECTURE AND ENGINEERING TECHNICAL DOCUMENTS to be submitted by the CONCESSIONAIRE shall be as follows:**

- i. Preliminary Architectural Study (EP-ARQ);
- ii. BASIC DESIGN (PB-ARQ) and Complementary Designs;
- iii. DOCUMENTATION FOR LICENSING;
- iv. DETAILED DESIGN (PE-ARQ) and Complementary Designs;
- v. Furniture and Equipment Plan (PME-ARQ);
- vi. Signage and Visual Communication Plan (CV-ARQ);
- vii. “As Built” Documentation.

Preliminary Architectural Study (EP-ARQ)

**3.4.** The Preliminary Architectural Study (EP-ARQ) consists of the presentation of initial technical information provided through drawings, illustrations, and descriptive memoranda that express the configuration of the building and the interventions planned for the EDUCATIONAL UNITS.

**3.4.1.** The Preliminary Architectural Study (EP-ARQ) shall include, as applicable:

- i. General site plan;
- ii. Floor plans of all levels;
- iii. Longitudinal and transverse sections sufficient for understanding the proposal;
- iv. Elevations;
- v. 3D perspectives expressing the volumetry and materiality;
- vi. Descriptive Memorandum including description of the interventions planned for the EDUCATIONAL UNITS, description of the structural system, construction system, vertical circulation systems, identification of the number and type of emergency exits, and identification of the roofing system adopted in the design;
- vii. Accessibility elements, as applicable, such as ramps and accessible restrooms.

BASIC DESIGN (PB-ARQ) and Complementary Designs

**3.5.** The BASIC DESIGN consists of the presentation of technical information and building infrastructure installations.

**3.5.1.** The information shall be presented through drawings, illustrations, and descriptive memoranda that express the configuration of the building and the interventions in the EDUCATIONAL UNITS.

**3.6.** The BASIC DESIGN shall include, as applicable:

- i. Presentation of the technical opinion and report of the preliminary stages, including information from the planialtimetric survey, geotechnical investigation, and tree survey;
- ii. General site plan;
- iii. Plan with earthworks information;
- iv. Sections with earthworks information;

**PROCESS No. 1260.01.0235354/2025-76**  
**INTERNATIONAL TENDER No. 001/2026**  
**SCHOOL INFRASTRUCTURE PPP**

- v. Floor plans of all levels;
- vi. Roof plan;
- vii. Longitudinal and transverse sections;
- viii. Elevations;
- ix. Details of building construction elements;
- x. Plan of wet areas (kitchens, bathrooms, restrooms, locker rooms, pantries);
- xi. Plans and sections of building services designs (electrical, data network, HVAC, plumbing, sanitary sewer, gas, pool heating);
- xii. Descriptive memorandum of the building;
- xiii. Descriptive memorandum of construction components and materials;
- xiv. 3D models and illustrations;
- xv. **WORKS IMPLEMENTATION PLAN;**
- xvi. Construction and Demolition Waste Disposal Plan;
- xvii. Technical and photographic report documenting all pre-existing elements, equipment, and infrastructure that will be subject to renovation or refurbishment.

**3.6.1.** The BASIC DESIGNS shall be accompanied by the registration with the Regional Council of Engineering and Agronomy (CREA), the Federal Council of Engineering and Agronomy (CONFEA), or the Council of Architecture and Urbanism (CAU) of the professionals or outsourced companies responsible for the works at the EDUCATIONAL UNITS, as well as the Construction and Demolition Waste Disposal Plan. The Construction and Demolition Waste Disposal Plan shall consist of:

- i. Identification of existing buildings within the CONCESSION AREA that will be demolished, presenting the area and height of the building and the volume of debris generated by the demolition;
- ii. Planning of initial and final storage;
- iii. Destination of the generated waste; and
- iv. Reuse plan, if applicable.

### DOCUMENTATION FOR LICENSING

**3.7.** The DOCUMENTATION FOR LICENSING consists of:

- i. Legal Design (PL-ARQ) and complementary designs;
- ii. Documentation for project approval by the Fire Department;

- iii. Other documents required for licensing and for the approval of works and demolitions at all levels and by all Municipal and State Public Administration authorities, including, when applicable, the Sanitary Permit, the Operating Permit, and the AVCB/CLCB.

#### WORKS LICENSING GUIDELINES.

- 3.7.1.** The Legal Design (PL-ARQ) and the documentation for tree management shall be prepared for approval by the Municipal Public Administration, considering the criteria and procedures for environmental licensing of new constructions, expansions, demolitions, urban land subdivision projects, and infrastructure works, in accordance with the environmental legislation in force in the State of Minas Gerais, especially the provisions of COPAM Normative Resolution No. 217/2017 (or the applicable current regulation) and ABNT NBR 16636 – Preparation and development of specialized technical services for architectural and urban design projects.
- 3.7.2.** The documentation for approval of the project by the Fire Department shall comprise information in the form of technical drawings and descriptive memoranda, prepared in accordance with the Technical Instructions of the Minas Gerais Military Fire Department, attesting to the compliance of the architectural design of the building with the standards for the implementation of fire prevention and firefighting systems.

#### DETAILED DESIGN (PE-ARQ) and Complementary Designs

- 3.8.** The DETAILED DESIGN (PE-ARQ) and Complementary Designs comprise the presentation of technical information and building infrastructure installations, with sufficient data for the execution of the works.
  - 3.8.1.** The DETAILED DESIGN (PE-ARQ) and Complementary Designs shall include:
    - i. General site plan;
    - ii. Plan with earthworks information;
    - iii. Sections with earthworks information;
    - iv. Floor plans of all levels;
    - v. Roof plan;
    - vi. Longitudinal and transverse sections;

- vii. Elevations;
- viii. Details of building construction elements;
- ix. Plan and detailing of wet areas (kitchens, bathrooms, restrooms, locker rooms, pantries).
- x. Plan and detailing of frames and railings, including the window and door schedule;
- xi. Plans and sections of building services designs (electrical, data network, HVAC, plumbing, sanitary sewer, gas, among others, and the water and electrical installation designs shall include water heating, where applicable);
- xii. Spreadsheet with the updated electrical load demand of the schools;
- xiii. Landscaping plans and sections;
- xiv. Descriptive memorandum of the building;
- xv. Descriptive memorandum of construction components and materials;
- xvi. Quantitative memorandum of construction components and building materials;
- xvii. Schedule with the main construction milestones and stages, aligned with the WORKS IMPLEMENTATION PLAN presented; and
- xviii. 3D models and illustrations.

#### Signage and Visual Communication Design (CV-ARQ)

**3.9.** The Signage and Visual Communication Design (CV-ARQ) consists of the presentation of technical information through drawings and descriptive memoranda that express the implementation of signage within the CONCESSION AREA and the application of visual communication elements in external and internal environments.

**3.9.1.** The Signage and Visual Communication Design (CV-ARQ) shall include:

- i. Design of the identification sign for the EDUCATIONAL UNIT to be installed in the external area;
- ii. Design of emergency signage;
- iii. Design of environment identification signs, including information in Braille and door numbering (where applicable);
- iv. Design of directional signage;
- v. Design of signage indicating floors and buildings;
- vi. Design of signs for posting information (used for notice boards in

- administrative areas);
- vii. Design of regulatory signage (rules, access restrictions, anti-smoking legislation, etc.);
  - viii. Design of communication boards for classrooms and internal circulation areas;
  - ix. Design of multi-purpose signage for classroom environments and for environments whose operation is independent of the operation of the EDUCATIONAL UNIT (used to disseminate information to members of the EDUCATIONAL COMMUNITY and the general public);
  - x. Communication Plan developed to define strategies, channels, and tools to inform members of the EDUCATIONAL COMMUNITY and the surrounding community of the EDUCATIONAL UNIT about the schedule, importance, opportunities generated, and other benefits resulting from this project.
- 3.10.** The alert and informational visual communication, materiality, pictograms, texts, sign sizes, and installation instructions for signage may be referenced from existing EDUCATIONAL UNITS, in accordance with the established standard.
- 3.11.** The implemented signage design shall be sufficient to enable members of the EDUCATIONAL COMMUNITY to orient themselves and move throughout the EDUCATIONAL UNIT independently, without the need for assistance, except for access to restricted or controlled areas.
- 3.12.** The CONCESSIONAIRE shall implement accessible signage, including the installation of tactile signage, maps, and tactile flooring, in compliance with the accessibility guidelines described in this EXHIBIT.
- 3.13.** In addition to signage, for EDUCATIONAL UNITS offering elementary education, the CONCESSIONAIRE shall implement, in the internal courtyard, circulation areas, stairways, and external environments, playful paintings that reference games, learning, and integration among children, such as hopscotch, multiplication tables, chess, among others. In this regard, the involvement of each EDUCATIONAL UNIT manager in defining the paintings is mandatory, in order to provide individuality and a sense of belonging.

- 3.13.1.** The CONCESSIONAIRE shall have creative freedom to propose the visual signage design, favoring a playful language appropriate to the use of each environment, without compromising legibility, clarity, and functionality.

#### “As Built” Documentation

- 3.14.** The “As Built” Documentation consists of the presentation of technical information through drawings and descriptive memoranda that represent the works as constructed after their completion, highlighting the changes made that differ from the DETAILED DESIGN (PE-ARQ) and Complementary Designs, and serving to update the designs.
- 3.15.** For the preparation of the “As Built” Documentation, ABNT NBR 14645 [Preparation of “as built” documentation for buildings] shall be observed.
- 3.16.** In preparing the “As Built” Documentation, the CONCESSIONAIRE shall provide elements considered relevant to support future interventions in the works, recording the physical conditions of execution.
- 3.17.** The CONCESSIONAIRE shall carry out the revision of the designs so that, simultaneously with execution, the changes made are recorded in the design documents and by means of sketches, in order to ensure the accuracy of the changes, their processing, and their history.
- 3.18.** The “As Built” Documentation shall cover all graphic elements contained in the executive design. When changes occur, they shall be incorporated into the “As Built” design. When no changes occur, the “As Built” design shall be the Executive Design, with the project title block indicating the designation “As Built” and the updated date.
- 3.19.** The BIM methodology shall be used in the processes of updating the designs, encompassing the maintenance performed in the EDUCATIONAL UNITS during the development and implementation phases of the project and the updating of the “As Built” documentation.

#### **4. TEMPORARY STRUCTURES**

- 4.1.** It shall be the responsibility of the CONCESSIONAIRE to implement up to 10 (ten) TEMPORARY STRUCTURES in EDUCATIONAL UNITS classified under the RELOCATION SCENARIOS With TEMPORARY STRUCTURE, listed in EXHIBIT D – LIST OF UNITS AND DESCRIPTIVE MEMORANDUM.
- 4.2.** The mobilization and implementation of the TEMPORARY STRUCTURE shall take place on the SITE of the EDUCATIONAL UNITS that can accommodate it, in areas external to the main buildings, prior to the commencement of the works, so that students may be served and attend classes, as well as to enable the operation of the EDUCATIONAL UNIT with its administrative functions, while the WORKS STAGE and the procedures for the HANDOVER OF THE WORKS are carried out.
- 4.2.1.** If, for technical or spatial reasons, or in order to ensure better progress of the works, the implementation of the TEMPORARY STRUCTURE on the land of the EDUCATIONAL UNIT is not the solution recommended by the CONCESSIONAIRE, the CONCESSIONAIRE may present alternatives for prior approval by the GRANTING AUTHORITY, including, but not limited to, the use of third-party land in the vicinity of the EDUCATIONAL UNIT, provided that adequate conditions of safety, accessibility, and operation are ensured.
- 4.3.** The TEMPORARY STRUCTURES shall follow the construction site standard, be new, and be of reusable prefabricated structure. Internal and external finishes shall be clad with cement boards and wood (OSB or Virola), with smooth cement flooring and PVC ceilings. They shall ensure minimum thermal and acoustic comfort for the continuity of pedagogical activities.
- 4.4.** The CONCESSIONAIRE shall be responsible for the transfer of all furniture, equipment, and their activation from the EDUCATIONAL UNIT to be renovated to the TEMPORARY STRUCTURE, as well as for the return of any reusable items at the end of the works.
- 4.4.1.** In the case of a Partial TEMPORARY STRUCTURE, the CONCESSIONAIRE shall be responsible for returning the furniture, equipment, and their activations to the EDUCATIONAL UNIT, as the environments are renovated, in stages.
- 4.5.** After completion of the works on the main building, the EDUCATIONAL COMMUNITY that was occupying the TEMPORARY STRUCTURE shall return to

use of the main building, so that the CONCESSIONAIRE may demobilize the TEMPORARY STRUCTURE.

**4.6.** The CONCESSIONAIRE shall then proceed with the relevant works in the external areas occupied by the TEMPORARY STRUCTURES, in order to conclude the WORKS STAGE for those EDUCATIONAL UNITS.

**4.7.** Each Shared or Dedicated TEMPORARY STRUCTURE shall be composed of the following facilities:

- i. A minimum of 4 (four) and a maximum of 24 (twenty-four) classrooms constructed on the site (with a slab-on-grade floor to be constructed and subsequently demolished), according to the number of classrooms in the current buildings of the respective EDUCATIONAL UNIT;
- ii. Classrooms shall have an area between 45 and 50 (forty-five and fifty) square meters and be equipped with air conditioning compatible with their intended use;
- iii. Restrooms with the same finishing standard, suitable for use and proportionate to the number of students;
- iv. Administrative area;
- v. Kitchen, cafeteria, and pantry areas capable of meeting the operational demand of an EDUCATIONAL UNIT compatible with the number of classrooms installed, as well as the demand of students during the lunch shift.

**4.8.** Each Partial TEMPORARY STRUCTURE shall be composed of at least 2 (two) classrooms, constructed on the site (with a slab-on-grade floor to be constructed and subsequently demolished), with the same characteristics as set forth in item 4.7.ii and, if necessary, shall also include a restroom module, in accordance with item 4.7.iii.

## **5. WORKS EXECUTION REPORT**

**5.1.** During the RENOVATION PHASE, the CONCESSIONAIRE shall submit to the GRANTING AUTHORITY the Works Execution Report, to inform the progress of the works and compliance with the stages set forth in the WORKS IMPLEMENTATION PLANS and BASIC DESIGNS.

**5.1.1.** The Works Execution Report shall be submitted monthly by the CONCESSIONAIRE to the GRANTING AUTHORITY, no later than the 10th (tenth) business day of the month following the reference period.

**5.1.2.** In the Works Execution Report, in addition to other relevant information, the following shall be presented, separately, for each EDUCATIONAL UNIT:

- i. Detailed schedule progress tracking;
- ii. Color digital photographs, indicating the date taken and the designation of the intervention, clearly showing the status and progress of the works and their location, always accompanied by a description highlighting the aspect depicted in the photograph;
- iii. Records of tests and controls, reports, technical opinions, assessments and measurements conducted, as well as other technical and administrative documents related to the works; and
- iv. Records of authorizations.

**5.1.3.** The Works Execution Reports shall be made available on the CONCESSIONAIRE's official website, accessible via the internet.

## **6. PREPARATION, SUBMISSION, AND APPROVAL OF ARCHITECTURE AND ENGINEERING TECHNICAL DOCUMENTS**

**6.1.** The preparation, submission, and approval of the ARCHITECTURE AND ENGINEERING TECHNICAL DOCUMENTS for the EDUCATIONAL UNITS shall constitute the PRE-WORKS STAGE.

**6.2.** It shall be incumbent upon the CONCESSIONAIRE, for all EDUCATIONAL UNITS, regardless of the TIPOLOGY adopted - according to the classification presented in item 10 of this document - to submit to the GRANTING AUTHORITY the BASIC DESIGNS related to the works, jointly, for each EDUCATIONAL UNIT, within up to 1 (one) month counted from the beginning of the PRE-WORKS STAGE, in accordance with the approved MACRO IMPLEMENTATION SCHEDULE and the table in item 6.8.

**6.2.1.** Once the Preliminary Architectural Studies (EP-ARQ), where applicable, and the BASIC DESIGNS have been submitted, the GRANTING AUTHORITY, with the support of the INDEPENDENT VERIFIER, shall issue its position—either approving them or specifying any corrections or additions deemed necessary—within a maximum period of 10 (ten) days.

- 6.2.2.** If corrections or additions are requested by the GRANTING AUTHORITY to the Preliminary Architectural Studies (EP-ARQ), where applicable, and to the BASIC DESIGNS, the CONCESSIONAIRE shall implement them and resubmit the BASIC DESIGNS within a maximum period of 15 (fifteen) days.
- 6.2.3.** In the event of resubmission of the Preliminary Architectural Studies (EP-ARQ), where applicable, and the BASIC DESIGNS by the CONCESSIONAIRE, pursuant to the previous subitem, with the duly requested corrections and additions, the GRANTING AUTHORITY, with the support of the INDEPENDENT VERIFIER, shall issue its position within 5 (five) days regarding approval or rejection of the documents. In the latter case, it shall present the reasons for non-approval, listing and justifying the corrections and additions previously requested and not addressed.
- 6.2.4.** Any of the deadlines set forth in items, 6.2, 6.2.1, 6.2.2 and 6.2.3 may be amended by mutual agreement between the PARTIES.
- 6.3.** The submission of the Preliminary Architectural Studies (EP-ARQ) and the BASIC DESIGNS in a segregated manner, as an exception to the rule set forth in items 6.1 and 6.2, may be authorized by the GRANTING AUTHORITY, upon a duly justified request by the CONCESSIONAIRE.
- 6.4.** Once the Preliminary Architectural Studies (EP-ARQ), where applicable, and the BASIC DESIGNS are approved by the GRANTING AUTHORITY, the CONCESSIONAIRE shall process the relevant technical documents in compliance with applicable legal requirements, as well as file the DOCUMENTATION FOR LICENSING with the other competent authorities, as applicable, for the interventions in all EDUCATIONAL UNITS.
- 6.4.1.** The costs related to the submission and filing of documents and projects, before the approval authorities and entities responsible for issuing permits, shall be borne by the CONCESSIONAIRE, as well as any costs arising from the submission of corrected documents in accordance with requirements imposed by the GRANTING AUTHORITY.
- 6.5.** After obtaining all licenses and permits referred to in subitem 2.7.2, , the CONCESSIONAIRE shall submit the DETAILED DESIGNS (PE-ARQ) and Complementary Designs to the GRANTING AUTHORITY for acknowledgment within up to 2 (two) months, with respect to the EDUCATIONAL UNITS.

- 6.5.1.** As a means to expedite the development and submission process of the DETAILED DESIGNS (PE-ARQ) and Complementary Designs, it is recommended that the development of such designs be initiated concurrently with the process of obtaining licenses, permits, and authorizations from the competent authorities.
- 6.6.** On the first business day immediately following the mutual fulfillment of the obligation to obtain the licenses and permits referred to in subitem 2.7.2 and to submit the DETAILED DESIGNS (PE-ARQ) and Complementary Designs to the GRANTING AUTHORITY, the CONCESSIONAIRE shall notify the GRANTING AUTHORITY of the date for commencement of the works.
- 6.6.1.** The COMMENCEMENT DATE OF THE WORKS shall be five (5) business days after the aforementioned notice, and the CONCESSIONAIRE shall then be authorized to commence the works for the EDUCATIONAL UNITS.
- 6.6.2.** The CONCESSIONAIRE and the GRANTING AUTHORITY shall observe the provisions set forth in items 8.10 and 8.10.1, , so that the necessary alignments and actions with the MANAGEMENT OF THE UNITS are properly carried out prior to the start of the WORKS STAGE.
- 6.7.** Within thirty (30) days from the WORKS COMMENCEMENT DATE, the CONCESSIONAIRE shall submit to the GRANTING AUTHORITY the Furniture and Equipment Plan (PME-ARQ) and the Signage and Visual Communication Plan (CV-ARQ) for the EDUCATIONAL UNITS.
- 6.7.1.** The CONCESSIONAIRE shall include in the Furniture and Equipment Plan (PME-ARQ), in addition to the furniture for the respective environments, urban furniture for external areas within the EDUCATIONAL UNIT (such as drinking fountains, waste bins, and benches).
- 6.7.2.** Once the Furniture and Equipment Plan (PME-ARQ) and the Signage and Visual Communication Plan (CV-ARQ) have been submitted, the GRANTING AUTHORITY, with the support of the INDEPENDENT VERIFIER, shall issue its opinion - either approving them or specifying the required corrections or additions - within a maximum period of thirty (30) days.
- 6.7.3.** If corrections or additions are requested by the GRANTING AUTHORITY to the FURNITURE AND EQUIPMENT PLAN (PME-ARQ) or to the SIGNAGE AND VISUAL COMMUNICATION PLAN (CV-ARQ) for the EDUCATIONAL UNITS of

the respective GROUP, the CONCESSIONAIRE shall implement such corrections or additions and resubmit them within a maximum period of fifteen (15) days.

- 6.7.4.** In the event of resubmission of the FURNITURE AND EQUIPMENT PLAN (PME-ARQ) or the SIGNAGE AND VISUAL COMMUNICATION PLAN (CV-ARQ) by the CONCESSIONAIRE, pursuant to the previous subitem, the GRANTING AUTHORITY, with the assistance of the INDEPENDENT VERIFIER, shall approve them within a maximum period of five (5) days.
- 6.7.5.** The CONCESSIONAIRE shall be responsible for the acquisition and installation in all internal and external environments of the EDUCATIONAL UNITS, in accordance with the Furniture and Equipment Plan (PME-ARQ) and the Signage and Visual Communication Plan (CV-ARQ) previously approved by the GRANTING AUTHORITY, with the support of the INDEPENDENT VERIFIER.
- 6.8.** Within up to 30 (thirty) days from the PROVISIONAL ACCEPTANCE or the FINAL ACCEPTANCE, if the latter has been issued directly without the former, the CONCESSIONAIRE shall submit to the GRANTING AUTHORITY the “As Built” Documentation for the EDUCATIONAL UNIT.
- 6.8.1.** Once the “As Built” Documentation has been submitted, the GRANTING AUTHORITY, with the support of the INDEPENDENT VERIFIER, shall issue its opinion, approving it or specifying any corrections or additions deemed necessary, within a maximum period of 30 (thirty) days.
- 6.8.2.** If corrections or additions are requested by the GRANTING AUTHORITY to the “As Built” Documentation for the EDUCATIONAL UNIT, the CONCESSIONAIRE shall implement them and resubmit the documentation within a maximum period of 15 (fifteen) days.
- 6.8.3.** In the event of resubmission of the “As Built” Documentation by the CONCESSIONAIRE, under the terms of the previous subitem, the GRANTING AUTHORITY and the INDEPENDENT VERIFIER shall approve it within a maximum period of 5 (five) days.
- 6.9.** The table below summarizes the maximum deadlines for the submission of each of the elements that comprise the ARCHITECTURE AND ENGINEERING TECHNICAL DOCUMENTS.

*Triggers and maximum deadlines for the preparation and submission of documents*

TECHNICAL ARCHITECTURE AND ENGINEERING DOCUMENTS	TRIGGER	DEADLINE
a) Preliminary Architectural Study (EP-ARQ)	Date of the Educational Unit Start Order / Start of the Pre-Works Stage	30 days
b) BASIC DESIGN (PB-ARQ) and Detailed Desing	Date of the Educational Unit Start Order / Start of the Pre-Works Stage	30 days
c) Documentation for Licensing	Approval of the Preliminary Architectural Studies (EP-ARQ), where applicable, and of the BASIC DESIGNS	Estimated at 30 days
d) DETAILED DESIGN (PE-ARQ) and Complementary Designs	Approval of the Preliminary Architectural Studies (EP-ARQ), where applicable, and of the BASIC DESIGNS	60 days
e) Furniture and Equipment Plan (PME-ARQ)	Start Date of the Works	30 days
f) Signage and Visual Communication Plan (CV-ARQ)	Start Date of the Works	30 days
g) "As Built" Documentation	Issuance of the Provisional Acceptance	30 days

## **7. LICENSES AND AUTHORIZATIONS**

**7.1.** The CONCESSIONAIRE is responsible for obtaining all authorizations, permits, licenses, and approvals required from the respective bodies and entities of the Public Administration at the federal, state, and municipal levels, for the execution of activities related to the CONCESSION.

**7.2.** The CONCESSIONAIRE is responsible for submitting the documentation required to obtain permits and licenses and to initiate urban and environmental licensing procedures, and shall submit the conceptual, executive, and complementary designs required by the competent authorities for approval by the respective

federative entity, water and energy utilities, and any other entities as may be necessary.

- 7.3. The CONCESSIONAIRE shall be responsible for obtaining approval for works and demolitions from all relevant instances and bodies of the Municipal and State Public Administration.
- 7.4. Urban planning licensing procedures shall be processed with the competent municipal authority, in accordance with the municipal regulations governing procedures for new buildings, as specified in the Municipal Building Codes and in ABNT NBR 16636 – Preparation and development of specialized technical services for architectural and urban design projects.
- 7.5. For approval of the project by the Minas Gerais Military Fire Department and issuance of the Fire Department Approval Certificate, the CONCESSIONAIRE shall submit the required documentation, which shall comprise information in the form of technical drawings and descriptive reports, prepared in accordance with the technical instructions of this authority, attesting to the compliance of the architectural and building systems design with the standards for the implementation of fire and panic safety systems.

## **8. PROJECT AND CONSTRUCTION OBLIGATIONS**

- 8.1. The CONCESSIONAIRE is responsible for carrying out all surveys necessary for the preparation of the projects required for the execution of the AGREEMENT, and any information, drawings, surveys or other documents made available by the GRANTING AUTHORITY shall be merely referential, with their use being at the sole risk and responsibility of the CONCESSIONAIRE.
- 8.2. The project and construction obligations in the EDUCATIONAL UNITS comprise all investments to be executed by the CONCESSIONAIRE in order to carry out the required interventions in the EDUCATIONAL UNITS, under the terms and conditions of the TENDER, AGREEMENT and applicable ANNEXES, including, but not limited to, the acquisition of materials and the hiring of labor and mechanical equipment to support civil construction, isolation measures, access control, acquisition and installation of signage and individual and collective Personal Protective Equipment (PPE) for workers, aimed at ensuring occupational safety at the construction site

and for people circulating around the work areas, as well as costs related to demolitions and the disposal of civil construction materials.

- 8.3.** When carrying out the obligations related to the preparation of projects and the execution of works in the EDUCATIONAL UNITS, the CONCESSIONAIRE shall comply with the applicable urban planning parameters and observe all applicable regulations at the federal, state, and municipal levels.
- 8.4.** The projects and works shall, whenever possible, adopt sustainable practices in their design and implementation, in order to promote energy efficiency, savings in the use of water and other inputs and materials, and the reduction of solid waste generation, also aiming to ensure comfort for members of the EDUCATIONAL COMMUNITY.
- 8.5.** The projects shall be based on the principles of flexible architecture, adaptable to different uses and activities, and shall make use of sustainable materials.
- 8.6.** The projects shall be prepared in compliance with the maintainability criterion, so that the building and the designed systems allow easy access for building inspections through the installation of supports for scaffolding, suspended platforms, lifelines, or other means that enable maintenance activities to be carried out.
- 8.7.** In accordance with FNDE guidelines, the projects must meet the following safety requirements for the use of the building, in compliance with NR35 – Work at Height, in order to prevent the following situations:
- i. falls of people from elevated places: roofs, roof slabs, and any elevated parts of the construction, through access control to these locations;
  - ii. falls of people due to irregularities on floors, ramps, and stairs;
  - iii. injuries caused by the rupture of subsystems or components, resulting in sharp or piercing parts, or due to the operation of moving parts, such as windows, doors, trapdoors, and others;
  - iv. injuries resulting from the detachment and projection of materials or components from roofs and façades;
  - v. injuries resulting from the detachment and falling of tanks, sinks, washbasins, and equipment normally fixed to walls; and
  - vi. injuries resulting from explosions caused by fuel gas leaks or gas confinement.

- 8.8.** The designs and works must comply, pursuant to ANNEX C – FURNITURE AND EQUIPMENT MANUAL of ABNT NBR 15575-1, with a minimum Design Service Life (DSL) of 30 (thirty) years.
- 8.9.** The execution of works in the EDUCATIONAL UNITS must observe the guideline for minimizing impacts on pedagogical activities and students, through the adoption of the following strategies:
- i. Carrying out works that require the shutdown of buildings during school recess periods, whenever possible;
  - ii. Whenever shutdown is necessary, even if partial, TEMPORARY STRUCTURES shall be adopted to avoid interruption of the pedagogical services provided;
  - iii. Isolation of the areas where works are carried out, with the creation of temporary access to the other environments of the EDUCATIONAL UNIT, when applicable;
  - iv. Prioritizing services according to the degree of urgency, risk, and complexity of the required interventions.
  - v. Any eventual need for intervention in deep foundations, concrete structures, masonry, and inspections or replacement of roofs and coverings shall be carried out during periods when the EDUCATIONAL UNITS are vacant, in order to reduce the potential impact of the works on the PEDAGOGICAL SERVICES in the EDUCATIONAL UNITS and to mitigate the risk of accidents;
  - vi. Activities not listed in the item above may be carried out during academic periods with rotation of environments; however, interventions in locations essential to the PEDAGOGICAL SERVICE shall be prioritized during periods of low student circulation (holidays, weekends, or outside class hours), especially for activities involving noise; and
  - vii. In the event of rotation of environments, the CONCESSIONAIRE shall install signage and barriers to isolate the area. Entrances and exits for staff shall be separated from those used by students and teachers.
- 8.10.** Previously, preferably at least 30 (thirty) days prior to the execution of the works, the GRANTING AUTHORITY shall, with the due support of the CONCESSIONAIRE, inform the respective EDUCATIONAL UNIT MANAGER of the commencement of the interventions at the EDUCATIONAL UNIT, carrying out the necessary

alignments and notices to ensure the proper progress of the works throughout the WORKS STAGE.

- 8.10.1.** The GRANTING AUTHORITY, the CONCESSIONAIRE, and the EDUCATIONAL UNIT MANAGER shall act collaboratively to ensure the safety of the members of the EDUCATIONAL COMMUNITY and of the furniture and equipment existing at the EDUCATIONAL UNIT.
- 8.11.** Other specific guidelines for works at the EDUCATIONAL UNITS:
- i. rational use of energy by promoting natural ventilation, cross-ventilation, and natural lighting in buildings;
  - ii. the use of light colors in internal and external areas and the shading of façades, aiming to reduce thermal load during summer and decrease expenditures on mechanical ventilation and air conditioning;
  - iii. the use of luminaires and lamps with high luminous efficiency, such as LED lamps or similar or superior technology, resulting in low installed power, reduced energy consumption and heat generation, and ensuring comfort for members of the EDUCATIONAL COMMUNITY;
  - iv. efficient sizing of electrical, hydraulic, CLIMATIZATION, and structural systems in order to avoid overloads and bottlenecks, damage to equipment, and material waste;
  - v. the use of lighting fixtures, heaters, equipment, and air-conditioning units with high energy efficiency labels;
  - vi. the collection and treatment of rainwater for reuse in garden irrigation and toilet flushing;
  - vii. the installation of water-saving devices in restrooms; and
  - viii. the use of waterless urinals or urinals with low-flow activation valves and automatic shut-off.
- 8.12.** Prior to carrying out any works at the EDUCATIONAL UNITS, the CONCESSIONAIRE shall conduct a survey of the required intervention needs, with the preparation of the corresponding Technical and Photographic Report, a document that forms part of the BASIC DESIGN (PB-ARQ).
- 8.13.** The installation of the construction site and the ancillary facilities (site sheds, accommodation, warehouse, office, first-aid area, installation of hoardings and identification of the technical manager responsible for the works, among others, as

applicable) shall be the responsibility of the CONCESSIONAIRE and shall comply with the quality and safety standards for construction sites set forth in NR 18 – Working Conditions and Environment in the Construction Industry, and other ordinances that amend and/or update said regulation.

- 8.14.** The CONCESSIONAIRE shall plan the constructions and temporary installations required for the proper progress of the works and shall propose the most appropriate location for the construction site, with a view to avoiding disturbances to the pedagogical services in operation or to other organizations located in the vicinity.
- 8.15.** The CONCESSIONAIRE shall provide horizontal and vertical signage for the works, in accordance with the applicable current legislation.
- 8.16.** No element of the construction site may hinder the circulation of vehicles and pedestrians on public roads, parking areas, street landscaping, lighting, or the visibility of signs and notices, as well as traffic signs and other installations of public interest, unless previously authorized by the Municipal Public Administration.
- 8.17.** The CONCESSIONAIRE shall ensure a clean construction site, adopting measures to protect materials and finishes and avoiding damage to existing furniture and equipment.
- 8.18.** The CONCESSIONAIRE shall comply with and enforce, at the construction site, the existing disciplinary regulations on safety and hygiene in the workplace, the requirements of the CIPA (Internal Commission for Accident Prevention), the provisions of Federal Law No. No. 6,514/1977, the Regulatory Standards related to Occupational Safety and Health, and all other applicable legal provisions.
- 8.19.** At the end of any works or engineering services, the CONCESSIONAIRE shall remove all installations from the camp and construction site, including equipment, temporary structures, debris, and leftover materials, so as to present the areas used in a completely clean condition.
- 8.20.** The GRANTING AUTHORITY may, at any time, upon verifying that the CONCESSIONAIRE has failed to comply with the obligations set forth in this SCHEDULE OF RESPONSIBILITIES FOR WORKS and the other EXHIBITS, or with the applicable standards, request that the CONCESSIONAIRE carry out the adjustments and adaptations deemed necessary.

Guidelines for refurbishment and requalification

**8.21.** In the refurbishment and requalification of the EDUCATIONAL UNITS, the CONCESSIONAIRE shall observe the guidelines set forth in the applicable legislation, in the PROGRAM OF REQUIREMENTS, in the CONCEPTUAL DESIGN, as applicable, and in this SCHEDULE OF RESPONSIBILITIES FOR WORKS.

**8.21.1.** The dimensions, characteristics, and layout of the environments shall comply with the capacity of each space, as described in the Model design of the State of Minas Gerais. The capacity of the other facilities and common areas shall consider the daily circulation of people in the EDUCATIONAL UNITS, for which a referential indication is presented in APPENDIX I - CONCEPTUAL DESIGN BY TYPOLOGY.

**8.21.2.** In the refurbishment and requalification, the CONCESSIONAIRE shall observe the use and capacity suggested for the environments in the EDUCATIONAL UNITS in the PROGRAM OF REQUIREMENTS and the characteristics of the typologies in the Model design of the State of Minas Gerais.

**8.21.2.1.** The provisions of subitem 8.21.2 shall be reviewed and assessed by the GRANTING AUTHORITY with the support of the INDEPENDENT VERIFIER, within the scope of the TECHNICAL ARCHITECTURE AND ENGINEERING DOCUMENTS to be submitted by the CONCESSIONAIRE for approval, as set forth in this CONSTRUCTION SCHEDULE OF RESPONSIBILITIES FOR WORKS.

**8.21.2.2.** The provisions of subitem 8.21.2 may be excepted in cases where changes in the capacities of the environments are indispensable for adapting the existing infrastructure to accessibility standards or to other legal requirements.

**8.22.** Any of the EDUCATIONAL UNITS, after completion of the works, shall not contain elements that include any type of asbestos or other minerals that may accidentally contain asbestos fibers in their composition.

### Structural system obligations

**8.23.** The CONCESSIONAIRE shall carry out the necessary interventions to implement corrections, maintenance, in accordance with NBR 5674 – Building Maintenance, and refurbishments to the existing structural systems of the EDUCATIONAL UNITS, for all typologies, in order to ensure their full integrity and safety, in addition to compliance with the elements set forth below:

**8.23.1.** Structural safety, the building's structural components, loads and overloads shall comply with ABNT NBR 8681 (Actions and Structural Safety – Procedures), ABNT NBR 6120 (Actions for the design of building structures), ABNT NBR 6122 (Design and Execution of Foundations), ABNT NBR 6123 (Wind loads on buildings), and other applicable standards.

**8.23.2.** For corrections to the structural systems, the CONCESSIONAIRE shall respect the pre-existing structural models of the EDUCATIONAL UNITS and carry out its interventions using the same construction methodology concept.

**8.23.3.** The structural interventions to be carried out shall comply with the following relevant technical standards for each structural system, as applicable to the design:

- i. Concrete structure: ABNT NBR 6118 (Design of concrete structures);
- ii. Steel structure: ABNT NBR 8800 (Design of Steel Structures and Composite Steel and Concrete Structures for Buildings);
- iii. Precast concrete structure: ABNT NBR 9062 (Design and Execution of Precast Concrete Structures).

### Obligations related to electrical building installations

**8.24.** The electrical building installations constitute the system for the supply of electric power and shall be composed, at a minimum, of:

- i. Incoming and metering substations;
- ii. Power transformation substations, when required;
- iii. Protection and grounding systems;
- iv. Electrical installations (panels and switchboards, switches and outlets, breakers, protection and control devices, etc.); and
- v. Electrical networks and cables.

- 8.25.** The CONCESSIONAIRE shall conduct the necessary interventions in the electrical installations of the EDUCATIONAL UNITS, for all typologies, ensuring their full functionality, integrity, safety, and compliance with the elements set forth below:
- 8.25.1.** The electrical building installations shall comply with ABNT NBR 5410 (Low-Voltage Electrical Installations), ABNT NBR 14039 (Medium-Voltage Electrical Installations from 1.0 kV to 36.2 kV), NBR 13570 (Electrical Installations in Places with Public Access – Specific Requirements), and other applicable standards.
  - 8.25.2.** The electrical installations shall also be subject, as applicable, to the energy supply standards established by the regulatory authorities and by the electric power distribution companies.
  - 8.25.3.** The electrical building installations design shall ensure the operation of systems required in the event of fire, even in the event of power supply failure, including, if necessary, load increases.
  - 8.25.4.** The electrical building installations, as well as other building structures, shall be inspected, designed, and corrected in order to safely ensure the air conditioning of classrooms, administrative rooms, other pedagogical and management spaces of the EDUCATIONAL UNIT, and cafeterias.
- 8.26.** The CONCESSIONAIRE shall carry out standard updates and corrections to outlets, switches, and other electrical components for all EDUCATIONAL UNITS, as usage needs arise, considering technological advances, safety, and the integrity of the electrical systems.
- 8.27.** The CONCESSIONAIRE shall ensure that all environments comply with the lighting standards established in the applicable technical standards, such as ABNT NBR ISO/CIE 8995-1 (Lighting of Work Places – Part 1: Indoor).
- 8.28.** The use of LED lamps or similar or superior technology is mandatory to ensure improved energy efficiency.
- 8.28.1.** External lighting shall cover access points, pathways, leisure areas, and parking areas, providing clear and safe guidance for users.
  - 8.28.2.** The external lighting system shall be equipped with light sensors for automatic activation, optimizing energy use.
  - 8.28.3.** The layout and intensity of external lighting shall facilitate safe circulation, avoid dark areas, and contribute to the safety of the spaces.

Obligations related to water supply and sanitary sewer installations

- 8.29.** The CONCESSIONAIRE shall carry out the necessary interventions in the water supply and sanitary sewer installations of the EDUCATIONAL UNITS, for all typologies, ensuring their full operation, integrity, safety, and compliance with the elements set forth below:
- 8.29.1.** The cold water, hot water, and building sanitary sewer installations shall comply with ABNT NBR 5626 (Building water supply systems for cold and hot water — Design, execution, operation, and maintenance) and ABNT NBR 8160 (Building sanitary sewer systems — Design and execution), or the standards that may replace them, respectively.
- 8.29.2.** The cold water, hot water, and building sanitary sewer installations shall comply with the standards of the water supply and sewerage utility(ies) operating in the municipality of Minas Gerais.
- 8.29.3.** The CONCESSIONAIRE shall ensure the full operation of hot water supply points in kitchens and other locations indicated in its BASIC DESIGN and DETAILED DESIGN projects.
- 8.29.4.** The CONCESSIONAIRE shall be responsible for maintaining the proper connection of the water supply and sanitary sewer installations to the local public sanitation services, ensuring compliance with infrastructure requirements and any adaptations necessary for such connection.
- 8.29.5.** All toilet bowls shall be equipped with toilet seats with lids and shall comply with ABNT NBR 16729 (Toilet seats — Requirements and test methods) and other applicable standards, and any damaged items or items in poor condition shall be replaced.
- 8.29.6.** The CONCESSIONAIRE shall ensure that the sanitary sewer installations are free from originating odors, in accordance with ABNT NBR 8160 (Building sanitary sewer systems — Design and execution), so that the sanitary sewer system includes adequate ventilation and does not allow back siphonage or loss of the water seal. If such structures present malfunction, they shall be refurbished to ensure proper operation. When the sewer system consists of a septic tank, the conditions necessary for direct connection to the public sewer network shall be assessed.
- 8.29.7.** If the EDUCATIONAL UNIT has a septic tank or similar sewage disposal device, it shall be decommissioned in accordance with the applicable standards,

procedures, and legislation, and replaced by a connection to the public sewage collection network.

- 8.29.8.** All environments supplied with water and sanitary sewer installations shall be installed or refurbished with granite countertops, basins, sanitary fixtures, metal fittings, and drains.
- 8.29.9.** Specifically for basins, sanitary fixtures, flow-regulating metal fittings (faucets, valves), and drains, the use of PVC materials is prohibited.
- 8.29.10.** All environments supplied with water and sanitary sewer installations shall be installed or refurbished with watertight, non-slip flooring finishes, duly waterproofed.
- 8.29.11.** All environments supplied with water and sanitary sewer installations shall be installed or refurbished with moisture-resistant wall finishes on the masonry, from floor to ceiling; mixed solutions combining half-height wall finishes and paint in these environments shall not be accepted.

#### Obligations related to gas installations

- 8.30.** The CONCESSIONAIRE shall carry out the necessary interventions in the gas installations of the EDUCATIONAL UNITS, for all typologies, ensuring their full operation, integrity, safety, and compliance with the elements set forth below:
- 8.30.1.** The internal piped gas distribution network shall comply with the applicable standards, such as ABNT NBR 15358 (Internal distribution network for fuel gas in non-residential installations up to 400 kPa — Design and execution), NBR 15526 (Internal distribution networks for fuel gases in residential and commercial installations — Design and execution), NBR 13523 (Liquefied Petroleum Gas – LPG storage centers), and IT 23 of the CBMMG (Handling, storage, commercialization, and use of Liquefied Petroleum Gas – LPG).
- 8.30.2.** If there is no external piped gas service line outside the CONCESSION AREA that allows immediate connection of the internal gas network to the municipal gas utility network in the State of Minas Gerais, the CONCESSIONAIRE shall be responsible for refurbishing and maintaining gas shelters in good condition for all environments where gas supply is required.
- 8.30.3.** In the event of a change in the type of gas supplied to the EDUCATIONAL UNIT (piped natural gas or LPG cylinders), the review, refurbishment, and conversion, if necessary, of all relevant equipment and installations shall be carried out.

- 8.30.3.1.** Gas installations shall also comply with the standards of gas utilities and LPG cylinder manufacturers, when applicable.
- 8.30.3.2.** All gas installations shall be refurbished to include flow control valves, safety shut-off devices, and other materials necessary to ensure the complete gas connection to the equipment that uses such installations.
- 8.30.3.3.** The CONCESSIONAIRE shall be responsible for connecting the gas installations to the public gas supply service, when applicable, ensuring compliance with infrastructure requirements and any adaptations necessary for such connection.
- 8.30.3.4.** All environments in which gas is supplied shall comply with the applicable safety and permanent ventilation requirements.

#### Obligations regarding stormwater drainage systems

**8.31.** The CONCESSIONAIRE shall carry out the necessary interventions to the stormwater drainage systems of the EDUCATIONAL UNITS, for all typologies, ensuring their full operation, integrity, safety, and compliance with the elements set forth below:

- 8.31.1.** Flooding of public sidewalks due to the discharge of stormwater from the drainage systems of the EDUCATIONAL UNITS shall not be permitted.
- 8.31.2.** The flow and drainage of stormwater shall comply with ABNT NBR 10844 (Building stormwater drainage systems – Procedure), with adequate capacity for the collection and discharge of rainwater.
- 8.31.3.** The CONCESSIONAIRE is encouraged to implement systems that enable the reuse of stormwater for uses permitted under applicable legislation.

#### Obligations regarding fire prevention and fire and panic protection systems

**8.32.** The CONCESSIONAIRE shall carry out the necessary interventions to the fire prevention and fire and panic protection systems of the EDUCATIONAL UNITS, for all typologies, ensuring their full operation, integrity, safety, and compliance with the elements set forth below:

**8.32.1.** The fire protection system shall be composed of emergency exits, escape route signage, fire detection and alarm systems, emergency lighting systems, and fire-fighting equipment (sprinklers, showers, hoses, hydrants, etc.).

**8.32.2.** The fire protection system shall comply with the standards that establish requirements for this system, in particular:

- i. ABNT NBR 5667 (Ductile cast iron urban fire hydrants);
- ii. ABNT NBR 9077 (Design of emergency exits);
- iii. ABNT NBR 17240 (Fire detection and alarm systems — Design, installation, commissioning, and maintenance of fire detection and alarm systems — Requirements);
- iv. ABNT NBR 10898 (Emergency lighting systems);
- v. ABNT NBR 11742 (Fire doors for emergency exits);
- vi. ABNT NBR 11861 (Fire hoses — Requirements and test methods);
- vii. ABNT NBR 12615 (Foam fire-fighting systems — Low and medium-expansion foam), when applicable;
- viii. ABNT NBR 12779 (Fire hoses — Inspection, maintenance, and care);
- ix. ABNT NBR 10897 (Automatic sprinkler fire protection systems — Requirements), when applicable;
- x. ABNT NBR 13714 (Fire hydrant and hose-reel systems for fire fighting);
- xi. ABNT NBR 14276 (Fire and emergency brigades — Requirements and procedures);
- xii. ABNT NBR 14349 (Fire hose couplings — Requirements and test methods);
- xiii. ABNT NBR 16820 (Emergency signage systems — Design, requirements, and test methods);
- xiv. ABNT NBR 12693 (Fire extinguisher protection systems); and
- xv. Technical Instructions of the Fire Brigade and related Decrees of the State of Minas Gerais.

**8.33.** Compliance with the provisions set forth in item 7 and its associated subitems does not exempt the CONCESSIONAIRE from the obligation to obtain, for all applicable buildings within its CONCESSION AREA, the Fire Department Inspection Certificate) or the Fire Department License Certificate, as well as to carry out all related obligations, measures, and interventions.

**8.34.** Fire prevention shall also be ensured through lightning protection systems, protection against ignition risks in electrical installations, and protection against leakage risks in gas installations.

**8.35.** The construction materials used shall hinder the widespread propagation of flames in the event of a fire and shall not emit toxic gases, in accordance with the applicable technical standards and Fire Department technical instructions.

Obligations regarding Lightning Protection Systems (Sistemas de Proteção contra Descargas Atmosféricas – SPDA) installations

**8.36.** The CONCESSIONAIRE shall carry out the necessary interventions in the lightning protection systems (SPDA) installations of the EDUCATIONAL UNITS, for all typologies, ensuring their full operation, integrity, safety, and compliance with the elements set forth below:

**8.36.1.** Buildings shall be provided with a lightning protection system in accordance with ABNT NBR 5419 (Protection of structures against lightning) and other applicable standards and legislation.

**8.36.2.** Protective measures shall be adopted to reduce physical damage and risks to life within the areas of the EDUCATIONAL UNITS, considering both external and internal environments, in accordance with Part 3 (Physical damage to structures and life hazard) of the aforementioned standard.

**8.36.3.** Protective measures shall be adopted to reduce failures of electrical and electronic systems within a structure, namely Surge Protection Measures (SPM), in accordance with Part 4 (Electrical and electronic systems within structures) of the aforementioned standard.

Obligations regarding exhaust and ventilation system installations

**8.37.** The CONCESSIONAIRE shall carry out the necessary interventions in the exhaust and ventilation system installations, prioritizing natural ventilation and exhaust whenever possible, in the EDUCATIONAL UNITS, for all typologies, ensuring that kitchens are refurbished to include an exhaust system associated with an industrial stove, in accordance with ABNT NBR 14518 (Ventilation systems for professional kitchens).

Obligations regarding air-conditioning system installations

**8.38.** The CONCESSIONAIRE shall carry out the necessary interventions for the installation of air-conditioning systems in the EDUCATIONAL UNITS, for all typologies, ensuring their full operation, integrity, safety, and compliance with the requirements set forth below:

**8.38.1.** Air-conditioning systems shall be mandatorily installed in all classrooms, support rooms, laboratories, libraries, reading rooms, auditoriums, common areas, the secretariat, and administrative areas of the EDUCATIONAL UNITS, regardless of typology, with the proviso that air renewal shall be ensured according to the characteristics of each environment and that air filters shall be properly maintained.

**8.38.2.** Air-conditioning installations shall comply with the specifications of ABNT NBR 16401 (Air conditioning installations – Central and unitary systems – Part 1: Installation design), Ordinance No. 3,523/98 of the Ministry of Health, and ANVISA Resolution RE No. 9, with respect to indoor air quality.

**8.38.3.** Air-conditioning condenser units shall be installed in external areas and protected against weather conditions. However, condenser units fixed to external façade walls without protection shall not be permitted.

**8.38.3.1.** Air-conditioning condenser equipment may be located immediately on the external side of the air-conditioned environment, provided that it is protected, properly organized, centralized, and positioned in a standardized manner in relation to all other installed units. The guidelines of the CONCEPTUAL DESIGNS regarding interventions on facades shall be observed.

**8.38.4.** Where air-conditioning equipment already exists in the EDUCATIONAL UNITS, such equipment may be reused, provided that it is duly assessed and has sufficient capacity to fully meet the requirements in accordance with the applicable technical standards. In any situation in which the existing equipment does not comply with the standards or cannot operate properly, it shall be replaced with new units.

**8.38.5.** When acquiring air-conditioning equipment, the CONCESSIONAIRE shall require the PROCEL label – National Program for Energy Conservation – and the INMETRO label – National Institute of Metrology, Standardization, and Industrial Quality.

**8.38.6.** With the exception of the solution involving the installation of window-type air-conditioning units, which shall not be permitted, the CONCESSIONAIRE may define and implement other cooling technologies and systems in the EDUCATIONAL UNITS, provided that they comply with Regulatory Standard NR-17 (Ergonomics) of the Ministry of Labor, which establishes parameters to ensure thermal comfort conditions, considering air velocity, temperature, and humidity.

Obligations regarding Information and Communication Technology (Tecnologia da Informação e Comunicação – TIC) system installations

**8.39.** The CONCESSIONAIRE shall carry out the necessary interventions and provide installations related to Information and Communication Technology systems and infrastructures in the EDUCATIONAL UNITS, for all typologies, ensuring their full operation, integrity, safety, and compliance with the elements set forth below:

- i. Installation of wi-fi network infrastructure, including the supply and installation of routers, access points, and other necessary electronic devices;
- ii. Installation of wired network infrastructure, including the supply of Ethernet cables, routers, and other necessary equipment;
- iii. Supply and installation of electronic devices and other infrastructure equipment necessary for the operation and functioning of the activities of each of the EDUCATIONAL UNITS, such as computers, projectors, peripherals and accessories (keyboards, mice, mouse pads, cables, among others), monitors, screens, among others, in accordance with the provisions of the FURNITURE AND EQUIPMENT REFERENCE PLAN and the Furniture and Equipment Plan (PME-ARQ) to be approved by the GRANTING AUTHORITY;
- iv. The computers shall be equipped with: Windows 11 Operating System license or higher; OFFICE 365 package (word processing application, spreadsheet application, and presentation application); content filtering and blocking of websites containing inappropriate content, such as sex, drugs, pornography, pedophilia, violence, and weapons, among others, at the discretion of the GRANTING AUTHORITY.
- v. Environments for computer use by members of the EDUCATIONAL COMMUNITY, including libraries, laboratories, special classrooms, and

others, in accordance with the Furniture and Equipment Plan (PME-ARQ) to be approved by the GRANTING AUTHORITY with the support of the INDEPENDENT VERIFIER; and

- vi. Supply and installation of an internal communication infrastructure among the various environments of the EDUCATIONAL UNITS, such as, by way of example, a PABX extension system.

**8.39.1.** The wi-fi network shall enable free internet access, at a minimum speed of 100 Mbps, to all members of the EDUCATIONAL COMMUNITY and to individuals circulating within the CONCESSION AREA, in all covered areas of the buildings and on all floors, as well as in external areas, and in this case, especially near benches.

**8.39.2.** The wi-fi network signal coverage shall be complete on all floors and in all covered areas of the CONCESSION AREA, with a minimum signal strength of 80%.

**8.39.3.** The wired network shall enable the connection of all computers installed in classrooms, support rooms, laboratories, libraries, auditoriums, the secretariat, and administrative areas, with internet access at a minimum speed of 100 Mbps.

**8.39.4.** In providing the ICT infrastructure, the CONCESSIONAIRE shall observe, in addition to the applicable standards, the following guidelines:

- i. Adoption of governance policies and practices to ensure the security of data belonging to members of the EDUCATIONAL COMMUNITY;
- ii. Adoption of policies and practices to prevent and respond to threats to information security;
- iii. Provision of a flexible solution capable of absorbing technological innovations and variations in demand over time; and;
- iv. Technological updating and maintenance of the infrastructure.

#### Obligations regarding thermal performance and ventilation

**8.40.** The CONCESSIONAIRE shall carry out the necessary interventions in the installations of the EDUCATIONAL UNITS, for all typologies, ensuring their full operation, integrity, safety, and compliance with the following requirements regarding thermal performance and ventilation:

**8.40.1.** The overall thermal performance of the building and the minimum levels of natural ventilation of the environments shall comply with the specifications of the

applicable bioclimatic zone for each CONCESSION AREA of each EDUCATIONAL UNIT, in accordance with ABNT NBR 15220 (Thermal Performance of Buildings), or the standard that replaces it.

**8.40.2.** Facades that receive intense solar radiation and may cause glare during external activities shall be adapted through the installation of solar radiation and temperature control devices, such as brise-soleil and blinds.

**8.40.3.** The concentration of carbon dioxide (CO<sub>2</sub>) in all occupied environments shall be equal to or lower than one thousand parts per million (ppm), which is the maximum value recommended by the National Health Surveillance Agency (Anvisa – Resolution No. 8.765/2023).

#### Lighting Performance Requirements

**8.41.** The CONCESSIONAIRE shall carry out the necessary interventions in the facilities of the EDUCATIONAL UNITS, for all typologies, ensuring their full operation, integrity, safety, and compliance with the elements set forth below regarding lighting performance:

**8.41.1.** The illuminance levels of the environments comprising the EDUCATIONAL UNITS shall meet the criteria for natural and artificial lighting for interior spaces, in accordance with the specifications of ABNT NBR 15215 (Daylighting) and ABNT NBR ISO/CIE 8995 (Lighting of Workplaces), or any standards that may replace them.

**8.41.2.** When works are carried out in external spaces, areas, or environments of the EDUCATIONAL UNITS, the CONCESSIONAIRE shall promote interventions that ensure adequate natural lighting during daytime periods and appropriate lighting performance during nighttime periods.

#### Acoustic Performance Requirements

**8.42.** The CONCESSIONAIRE shall carry out the necessary interventions in the facilities of the EDUCATIONAL UNITS, for all typologies, ensuring their full operation, integrity, safety, and compliance with the elements set forth below regarding acoustic performance:

- 8.42.1.** The overall acoustic performance of the buildings shall comply with the specifications of ABNT NBR 10152 (Acoustics — Sound pressure levels in indoor environments of buildings), or the standard that replaces it, for the school building category.
- 8.42.2.** The CONCESSIONAIRE shall make use of materials that favor lower noise levels.
- 8.42.3.** The CONCESSIONAIRE shall evaluate not only sound insulation solutions, but also acoustic absorption solutions, especially in environments with high noise generation, such as cafeterias, courtyards, and sports courts. Acoustic reflectors may be implemented in environments where sound propagation within the space is required (such as voice projection).
- 8.42.4.** The CONCESSIONAIRE shall observe the acoustic comfort classification for each environment as indicated in the PROGRAM OF REQUIREMENTS.

#### Duties Related to Accessibility

- 8.43.** The CONCESSIONAIRE shall carry out the necessary interventions in the facilities of the EDUCATIONAL UNITS, for all typologies, ensuring compliance with the accessibility requirements set forth below:
- 8.43.1.** Accesses, environments, and internal circulation areas shall be refurbished to be accessible to persons with disabilities or reduced mobility and shall fully comply with all accessibility specifications, in accordance with the principles of universal design.
- 8.43.2.** Accesses, environments, and internal circulation areas shall comply with the applicable technical accessibility standards, including, among others, the Brazilian Standards ABNT NBR 16537 (Accessibility – Tactile floor signage – Guidelines for design development and installation), ABNT NBR 9050 (Accessibility to buildings, furniture, spaces, and urban equipment), and ABNT NBR 15599 (Accessibility – Communication in service provision).
- 8.43.3.** Without prejudice to the provisions of the preceding subitem, the CONCESSIONAIRE shall pay specific attention to the following accessibility requirements, which shall be implemented in compliance with the applicable standards:
- i. Presence of tactile signage to guide and orient persons with visual impairments;

- ii. Presence of handrails on stairs and ramps;
- iii. The entire flooring of the building shall present a dynamic coefficient of friction equal to or greater than 0.4, proven by testing carried out in accordance with ABNT NBR ISO 10545 (Ceramic Tiles)
- iv. Rooms with access to computers for members of the SCHOOL COMMUNITY, such as libraries and laboratories, shall provide at least 10% of their computers with assistive technologies or reasonable adaptations that ensure accessibility and effective use of the ICT infrastructure by persons with disabilities, in accordance with Federal Law No. 13,146/2015 (Statute of Persons with Disabilities); and
- v. Presence of at least one (1) telecommunications device for the deaf capable of transmitting text messages (TDD).

**8.43.4** In the event that full compliance with accessibility conditions proves to be technically unfeasible, due to structural aspects, constructive characteristics, or pre-existing conditions of the EDUCATIONAL UNITS, the CONCESSIONAIRE shall not be held liable, provided that such infeasibility is demonstrated through a technical report and previously communicated to the GRANTING AUTHORITY. In this case, the most technically and economically viable solution shall be jointly defined by the PARTIES, in compliance with the applicable standards and best engineering practices.

#### Obligations regarding materiality

**8.44.** The CONCESSIONAIRE shall have the freedom to choose the materials to be used in the works within the internal environments of the EDUCATIONAL UNITS, and shall prioritize durability, watertightness, safety, ease of maintenance and cleaning, as well as the selection of materials that ensure aesthetic cohesion with the EDUCATIONAL UNITS already existing in the State of Minas Gerais.

#### General Guidelines for Furniture

**8.45.** The implementation of the Furniture and Equipment Plan (PME-ARQ) by the CONCESSIONAIRE shall cover the entirety of the EDUCATIONAL UNITS prior to the conclusion of the WORKS STAGE.

- 8.46.** Whether through the implementation of new structures or the requalification of existing structures, or through the replacement of furniture at the end of its useful life, the guidelines set forth in the items below shall also be observed.
- 8.46.1.** The furniture to be installed shall comply with accessibility standards and, where applicable, shall consider specific equipment for children, with dimensions appropriate for use by members of the EDUCATIONAL COMMUNITY across different age groups.
- 8.46.2.** In external areas, the quantity and location of the furniture to be installed shall consider the circulation of people, as well as requirements related to efficiency and durability.
- 8.46.3.** In internal areas, the quantity and placement of furniture shall comply with the minimum reference standards presented, the minimum capacity of each environment, and the regulations applicable to the school environment, such as the specifications for the implementation of school furniture issued by the FNDE.
- 8.46.4.** The furniture provided shall meet, at a minimum, the requirements specified in EXHIBIT C – FURNITURE AND EQUIPMENT SPECIFICATIONS.
- 8.46.5.** Waste bins shall include selective collection bins, with standardized and integrated visual language, considering, for their installation, locations with higher concentrations of people.
- 8.46.6.** The installation of drinking fountains shall follow the guidelines set forth in the PROGRAM OF REQUIREMENTS. Drinking fountains shall be installed with accessible points for users with disabilities (PCD).
- 8.46.7.** Upon implementation of the furniture, the CONCESSIONAIRE shall provide installation, configuration, integration, and operation services for all equipment, in order to ensure performance, safety, and reliability compatible with the intended applications.
- 8.47.** The CONCESSIONAIRE shall properly size and maintain a contingency stock of furniture to ensure the following needs:
- i. Replacement in case of damage, breakage, loss of safety, or unplanned equipment shutdown;
  - ii. Replacement of equipment due to malfunction (recurring failures) or low performance; and
  - iii. Use of equipment by members of the EDUCATIONAL COMMUNITY to ensure continuity of activities during preventive maintenance.

- 8.47.1.** The sizing of the stock shall consider the probability of equipment failure or breakage and its criticality for the performance of activities within the CONCESSION AREA.
- 8.48.** The CONCESSIONAIRE shall, whenever necessary, carry out the renewal of equipment, especially ICT infrastructure assets and high-wear items, such as sports infrastructure, in order to keep them permanently updated and operational, considering the compatibility and interoperability of the equipment and the operational requirements for the different types of solutions adopted.
- 8.49.** In the acquisition of the equipment that composes the Furniture and Equipment Plan (PME-ARQ), the CONCESSIONAIRE shall, whenever applicable, require the PROCEL seal – National Program for Energy Conservation and the INMETRO seal – National Institute of Metrology, Standardization and Industrial Quality.

## **9. HANDOVER OF THE WORKS**

- 9.1.** The CONCESSIONAIRE shall notify the GRANTING AUTHORITY of the estimated date for completion of the works at the EDUCATIONAL UNITS in which the EDUCATIONAL COMMUNITY has been relocated to TEMPORARY STRUCTURES, or to other Educational Units of the Education Network outside the CONCESSION AREA, at least 2 (two) months prior to the completion of the works, in order to enable the initiation of the procedures necessary for the relocation and mobilization of the personnel responsible for the provision of PEDAGOGICAL SERVICES and of the students.
- 9.2.** Upon completion of the WORKS STAGE for each of the EDUCATIONAL UNITS, the GRANTING AUTHORITY, with the support of the INDEPENDENT VERIFIER, shall carry out, within a maximum period of 10 (ten) calendar days, a full inspection of the facilities, equipment and other elements related to the delivered works, for the purpose of conducting the technical inspection and assessing full compliance with the technical and legal requirements and with the provisions of this EXHIBIT.
- 9.3.** The inspection shall be conducted according to the scenario applicable to the EDUCATIONAL UNIT:
- **I – Vacant school (not in operation):** the inspection shall be carried out in full, covering all environments of the EDUCATIONAL UNIT at once;

- **II – School in operation (without student relocation):** the inspection shall be carried out by environment or set of completed environments, according to the agreed schedule, ensuring continuity of school activities and user safety.

**9.4.** The GRANTING AUTHORITY may require, as applicable, the prior performance of inspections by the competent authorities or may carry out such inspections directly. The inspection shall include the presence of members of the INSTITUTIONAL GOVERNANCE COMMITTEE and representatives specifically designated by the PARTIES.

**9.5.** For each EDUCATIONAL UNIT, the GRANTING AUTHORITY and the INDEPENDENT VERIFIER shall prepare a detailed report regarding the inspection, with a complete assessment of the works, and, at the end of the maximum period of 5 (five) days, counted from the date of the technical visit, shall decide on the issuance of a PROVISIONAL ACCEPTANCE, in case adjustments not preventing OPERATION are required, the rejection of the works, with indication of the technical grounds justifying such position, or the direct issuance of the FINAL ACCEPTANCE, if there are no pending issues.

**9.6.** The CONCESSIONAIRE shall notify the GRANTING AUTHORITY, with a copy to the EDUCATIONAL UNIT MANAGER, of the date of completion of the RENOVATION PHASE for each EDUCATIONAL UNIT up to 10 (ten) days prior to its completion.

**9.7.** The completion of the RENOVATION PHASE shall not release the CONCESSIONAIRE from carrying out any and all repairs, adjustments, replacements, or rework of works or installations identified by the GRANTING AUTHORITY.

**9.8.** The issuance of the PROVISIONAL ACCEPTANCE shall indicate that the EDUCATIONAL UNIT has had its works satisfactorily completed, even if adjustments, corrections, or other measures by the CONCESSIONAIRE are still required, as indicated by the GRANTING AUTHORITY, provided that such items do not prevent OPERATION.

**9.8.1.** Once the PROVISIONAL ACCEPTANCE has been issued by the GRANTING AUTHORITY and the requirements set forth in the AGREEMENT, in this EXHIBIT, in EXHIBIT B – SERVICES SPECIFICATIONS, and in EXHIBIT C – FURNITURE

AND EQUIPMENT SPECIFICATIONS have been complied with, the GRANTING AUTHORITY shall issue, within a maximum period of 15 (fifteen) days, the NOTICE TO PROCEED.

- 9.9.** For the purposes of verification or the request for corrections or additional information, the GRANTING AUTHORITY shall consider the terms of the BASIC DESIGN, COMPLEMENTARY DESIGNS, and the technical specifications defined in the AGREEMENT and the applicable EXHIBIT.
- 9.10.** In the event of issuance of the PROVISIONAL ACCEPTANCE with indications of required adjustments, the necessary corrections and/or additional works shall be completed within a maximum period of up to 30 (thirty) days.
- 9.11.** The period mentioned in item 9.10 may be extended upon justification presented by the CONCESSIONAIRE and accepted by the GRANTING AUTHORITY.
- 9.12.** After notification by the CONCESSIONAIRE of the completion of the adjustments indicated in the PROVISIONAL ACCEPTANCE, the GRANTING AUTHORITY shall carry out, within a maximum period of 10 (ten) calendar days, a new inspection of the facilities, equipment, and any other elements related to the works, for the purpose of conducting a technical inspection and evaluating full functionality and compliance with technical, legal, and contractual aspects. The GRANTING AUTHORITY may require the prior inspection by the competent authorities or request such inspection, as applicable.
- 9.13.** As for the technical inspection carried out for the issuance of the PROVISIONAL ACCEPTANCE, the inspection referred to in the previous item shall be attended by the members of the INSTITUTIONAL GOVERNANCE COMMITTEE and representatives specifically designated by the PARTIES.
- 9.14.** For each EDUCATIONAL UNIT, the GRANTING AUTHORITY shall prepare a detailed report regarding the inspection, with a complete assessment of the works, and, at the end of a maximum period of 5 (five) days, counted from the date of the technical visit, shall decide on the issuance of the FINAL ACCEPTANCE or on the indication of required adjustments and corrections, with identification of the technical grounds that justify such decision.

**9.15.** The FINAL ACCEPTANCE shall be issued to certify the implementation of the changes indicated by the GRANTING AUTHORITY, if previously required, and to attest to the full compliance of the works with the requirements set forth in the AGREEMENT and its EXHIBIT, as well as their definitive acceptance, including receipt of the AVCB/CLCB and the HABITE-SE clearance in the case of construction of new EDUCATIONAL UNITS..

**9.15.1.** Within a period of 30 (thirty) days from the issuance of the FINAL ACCEPTANCE, the CONCESSIONAIRE shall deliver the “As Built” Documentation and the Furniture and Equipment Handbook of the respective EDUCATIONAL UNIT to the EDUCATIONAL UNIT MANAGER and to the GRANTING AUTHORITY.

**9.16.** The GRANTING AUTHORITY may, at any time, upon verifying that the CONCESSIONAIRE has failed to comply with the obligations set forth in this EXHIBIT or with the applicable standards, require the CONCESSIONAIRE to carry out the necessary adjustments and adaptation.

## **10. PROGRAM OF REQUIREMENTS**

**10.1.** In order to identify the specific needs of the EDUCATIONAL UNITS, they were grouped into typologies. Each typology also includes elements to be observed by the CONCESSIONAIRE.

**10.2.** Four (4) main typologies and five (5) derivative typologies are presented, totaling nine (9) configurations, all based on the Model Designs of the State of Minas Gerais, considering criteria of size, functionality, and physical infrastructure. Each EDUCATIONAL UNIT shall be assigned one of these typologies, according to its specific needs and characteristic.

**10.3.** Architectural Typologies of the EDUCATIONAL UNITS:

### Typology A

School composed of four single-story blocks, with a small one-story block and a block dedicated to a covered sports court, with variation A1 (uncovered court) or A2 (without court). The structure is in exposed reinforced concrete, cast in place, and the masonry walls are also exposed, reinforcing an architectural character that values materiality

and constructive simplicity. The flooring is concrete, providing durability and ease of maintenance, while the external corridors allow efficient circulation and integration with the outdoor environment.

#### Typology B

School composed of two blocks with two floors (ground floor + 1), consisting of two main blocks and one block dedicated to a covered sports court. The considered variations are B1 with an uncovered court and B2 without a court. The structure is in exposed reinforced concrete, cast in place, and the masonry walls are also exposed, reinforcing the architectural language that values the exposure of constructive elements. The concrete flooring provides durability and ease of maintenance, while the covered external corridors ensure visual and functional integration between the blocks, in addition to favoring natural ventilation and lighting.

#### Typology C

School composed of three blocks, two single-story and one with three floors (T+1+1). The complex also includes two covered sports courts and a soccer field. The exposed reinforced concrete structure and the exposed masonry walls reinforce the robust constructive character and the architectural identity of the complex. The concrete flooring provides durability and ease of maintenance, while the external corridors ensure ventilation, natural lighting, and fluid circulation between the blocks.

#### Typology D

School composed of three blocks, two single-story and another with a basement, ground floor, and first floor, in addition to a block with a covered sports court. The variation considered is D1 (uncovered court). The structure is concealed reinforced concrete, cast in place. The masonry walls are finished, providing a more refined appearance and additional surface protection. The concrete flooring ensures durability and ease of maintenance, while the external corridors facilitate circulation and natural ventilation. This typology presents only one variation (D1), which represents a block with an uncovered sports court.

#### **10.4. Guidelines of the Program of Requirements Based on the Standard Design of the State of Minas Gerais**

- 10.4.1.** The Program of Requirements of the EDUCATIONAL UNITS was structured based on the guidelines and parameters established by the Standard Design of the State of Minas Gerais, which defines minimum requirements for physical infrastructure, spatial distribution, functionalities, and quality standards applicable to public school buildings.
- 10.4.2.** These guidelines aim to ensure the standardization of architectural solutions, cost rationalization, efficiency in execution, and the promotion of school environments suitable for the teaching–learning process.
- 10.4.3.** The application of the Program of Requirements shall consider the adaptation to the specific conditions of each site and each EDUCATIONAL UNIT, respecting their physical, topographical, urban surroundings, and current use characteristics, in order to ensure the technical, functional, and legal feasibility of the proposed solutions.
- 10.5.** Guidelines for internal and external elements of the EDUCATIONAL UNITS
- 10.5.1.** This subitem sets out conceptual elements to be observed by the CONCESSIONAIRE in the execution of works in the EDUCATIONAL UNITS. Such elements shall be applied to all EDUCATIONAL UNITS, regardless of the indicated Typology. The characteristics of the elements to be implemented by the CONCESSIONAIRE vary according to the application environment. For environments external to the buildings, that is, those located on the site and in open areas of the EDUCATIONAL UNITS, specific criteria shall apply. These Guidelines shall be applied to existing environments, as well as to the construction of new schools, within the scope of CONTINGENT INVESTMENTS under the AGREEMENT.
- 10.5.2.** The EDUCATIONAL UNITS are located on distinct sites; therefore, the development of external areas shall be unique to each of them. Notwithstanding, there are fundamental premises to be complied with by the CONCESSIONAIRE aimed at the requalification of use areas.
- 10.5.3.** The priority is the revitalization of areas and the implementation of new equipment and uses in the remaining areas, respecting the available spaces. The CONCESSIONAIRE may consider building setbacks as areas eligible for occupation and the implementation of newly revitalized permeable spaces, in accordance with the priority of environments indicated for each TYPOLOGY.

- 10.5.4.** For EDUCATIONAL UNITS whose external areas have limited definition of use, it shall be incumbent upon the CONCESSIONAIRE to develop its projects considering the implementation of the areas indicated in the conceptual study, in order to provide the best possible conditions for optimized occupation. Therefore, it is the responsibility of the CONCESSIONAIRE to carry out a complete revitalization of the external areas of the EDUCATIONAL UNITS.
- 10.5.5.** The GRANTING AUTHORITY has as a guideline the intensification of the use of external spaces whenever there are underutilized areas. This guideline entails the obligation for the CONCESSIONAIRE to revitalize all external areas, from the protection of their perimeter to the installation of furniture that encourages their intensive use..
- 10.5.6.** Thus, the external areas shall allow for maximum occupation, in accordance with the premises established in the conceptual study and in this SCHEDULE OF RESPONSIBILITIES FOR WORKS, whenever the site conditions or available areas so permit.

Prioritization of Pre-existing External Spaces and in the Construction of New School

**10.5.7. Multi-Sport Court:**

- 10.5.7.1.** Rationale: Essential for physical and sports activities and school events. Sports practice is directly linked to the physical, social, and emotional development of students.
- 10.5.7.2.** Rationale: Essential for physical and sports activities and school events. Sports practice is directly linked to the physical, social, and emotional development of students.

**10.5.8. Covered Courtyard/Recreation Area:**

- 10.5.8.1.** Rationale: A space for social interaction and recreation during breaks, ensuring comfort and protection on sunny or rainy days.
- 10.5.8.2.** Standard: Durable roofing, well-ventilated area, and basic furniture for rest and interaction.

**10.5.9. Circulation Areas (External Ramps and Stairs):**

- 10.5.9.1.** Rationale: To facilitate safe and accessible circulation between school blocks or environments.
- 10.5.9.2.** Standard: Accessibility in accordance with ABNT NBR 9050 (Accessibility to buildings, furniture, spaces, and urban equipment), including handrails, signage, and non-slip flooring.

**10.5.10.** Gardens and Green Areas:

**10.5.10.1.** Reason: They provide a pleasant environment and may be used for outdoor pedagogical activities, such as gardens or classes held in open spaces.

**10.5.10.2.** Standard: Simple and safe landscaping, prioritizing low-maintenance species and clearly defined access paths.

**10.5.11.** EDUCATIONAL UNITS that already have parking facilities shall have their use respected and maintained, considering the same level of occupancy currently in use. In the event of surplus parking spaces or areas designated for parking but not in use, the CONCESSIONAIRE shall assign a different use to such areas, based on the implementation of the spaces indicated and prioritized in the conceptual study. For EDUCATIONAL UNITS without parking facilities, there is no obligation to implement them.

Elements of external area equipment and spaces to be observed

**10.5.12.** Applicable to all TIPOLOGIES, the development of interventions, equipment, and solutions in the external areas of the EDUCATIONAL UNITS shall strictly comply with the national regulations applicable to each type of service, with mandatory observance of the following, in particular:

**10.5.12.1.** ABNT NBR 15575 (Residential Buildings — Performance): although this standard is aimed at the performance of residential buildings, some of its guidelines are applicable to the construction of support structures in multipurpose sports courts, such as locker rooms and restrooms, especially with regard to acoustic comfort, thermal comfort, and durability aspects.

**10.5.13.** The external perimeters of the EDUCATIONAL UNITS shall be maintained in accordance with the polygon defined in the CONCESSION AGREEMENT and the existing isolation structures; however, the recovery, revitalization, refurbishment, and painting of damaged areas of walls, fences, railings, gates, accesses, and sidewalks shall be mandatory.

**10.5.14.** The entire route between the main access gate to the SITE of the EDUCATIONAL UNIT and the main building, as well as the connections between buildings, shall mandatorily include the construction of a covered walkway, with the primary purpose of protection against rain and to ensure safe circulation

between these points. This access shall provide full accessibility for persons with disabilities.

- 10.5.15.** The execution of accessible routes and accesses for persons with disabilities within the EDUCATIONAL UNIT is mandatory, connecting the main building to the other areas of use, such as sports courts, gardens, squares, and similar spaces, with the proviso that these accesses are not required to be covered.
- 10.5.16.** The existing green areas shall be preserved, maintaining the trees already in place, except in cases where removal is necessary for the installation of external facilities planned in the project. In such cases, the CONCESSIONAIRE shall be responsible for requesting and obtaining the required licenses and approvals from the competent authorities. Additionally, all external areas outside the buildings and not otherwise occupied shall be grassed or planted with shade-providing tree species when the area is not designated for lawn use.
- 10.5.17.** The paved areas, defined by the interconnection between buildings, circulation routes and accesses, as well as the common plaza areas, shall be designed so that the EDUCATIONAL COMMUNITY can access the EDUCATIONAL UNIT building and its facilities without the need to cross permeable areas, except where equipment is intentionally located within such areas. The plazas shall include benches and small kiosks, providing shade and shared-use spaces during periods of intense sunlight. The quantity of these elements is referential, as illustrated in the proposed TIPOLOGIES.
- 10.5.18.** For EDUCATIONAL UNITS that have multi-sport courts and ancillary facilities (locker rooms, restrooms, storage areas, etc.), the CONCESSIONAIRE shall carry out the full recovery and revitalization of these spaces, including the necessary replacement of roofing tiles, sports equipment, court painting, locker room and sanitary furniture, and installations.
- 10.5.19.** The multi-sport court is envisaged for EDUCATIONAL UNITS with ample available area and without an existing court, with its dimensions adjustable to the conditions of each site, considering possible challenges such as tree removal, level differences, and existing infrastructure. This court shall have a roof.
- 10.5.20.** The size of the multi-sport court indicated as a reference in the conceptual studies may be adjusted to the possibilities of each site, considering constraints such as tree removal, level differences, and infrastructure.
- 10.5.21.** The CONCESSIONAIRE shall plan and implement, for all EDUCATIONAL UNITS, a security system comprising cameras capable of

performing full monitoring and proper data storage of the external areas, especially access points, the perimeter, and the circulation and common areas used by STUDENTS. Accordingly, the entire external area shall be monitored through dedicated cameras for each installed facility, such as playgrounds, courts, and plazas.

**10.5.22.** It should be noted that some EDUCATIONAL UNITS currently have a monitoring and security system; however, these systems have suboptimal structures and do not provide coverage of all areas and therefore shall be fully replaced.

**10.5.23.** The CONCESSIONAIRE shall be responsible for assessing and re-executing the implementation of the SPDA (Lightning Protection Systems) in all EDUCATIONAL UNITS, ensuring compliance with the applicable technical standards.

**10.5.24.** The CONCESSIONAIRE shall be responsible for assessing and re-executing the implementation of the logical communication networks of all EDUCATIONAL UNITS, ensuring compliance with the applicable technical standards and their full operational performance.

#### Elements of internal area equipment and spaces to be observed

**10.5.25.** The CONCESSIONAIRE shall provide and implement, for all EDUCATIONAL UNITS, a security system comprising cameras capable of monitoring internal areas, especially corridors, courtyards, and administrative areas.

**10.5.26.** It is noted that the EDUCATIONAL UNITS currently have a monitoring and security system; however, such systems are suboptimal and do not provide coverage of internal areas.

**10.5.27.** Floors shall be corrected or re-executed in order to ensure visual and technical standardization across all EDUCATIONAL UNITS, in line with best construction and design practices for school environments. The installation of granilite flooring is required in classrooms, laboratories, and administrative areas. In circulation areas and courtyards, the application of painted finishes shall be provided, with colors and designs to be proposed by the CONCESSIONAIRE in the BASIC DESIGN and approved by the GRANTING AUTHORITY.

- 10.5.28.** The CONCESSIONAIRE shall, for all EDUCATIONAL UNITS, carry out complete maintenance of all flooring in classrooms, auditoriums, libraries, secretariat and administrative areas, as well as common and social areas, due to their intensive use and the need to provide an environment with high durability.
- 10.5.29.** In wet areas, such as kitchens and their respective support areas, as well as restrooms, the CONCESSIONAIRE shall install ceramic finishes on floors and walls, observing the following minimum technical requirements: (i) ceramic tiles with PEI classification from 3 to 5; (ii) tiles with low water absorption (less than 3%); and (iii) tiles with an adequate coefficient of friction  $\geq 0.60$  for wet areas (ANSI A137.1 standard)
- 10.5.30.** The CONCESSIONAIRE shall, for all EDUCATIONAL UNITS, provide and install air-conditioning systems, on a mandatory basis, in all internal environments: classrooms, support rooms, laboratories, libraries, auditoriums, living areas, secretariat, and administrative areas. For kitchens and cafeterias, the CONCESSIONAIRE shall provide and install ventilation fans. Where air-conditioning equipment already exists in the EDUCATIONAL UNITS, such equipment shall be analyzed and may be reused, provided that it is duly assessed and has full capacity to meet current technical standards. In any situation where the equipment and related infrastructure do not exist, are inadequate, do not comply with standards, or cannot operate properly, they shall be replaced.
- 10.5.31.** The CONCESSIONAIRE shall prepare the DETAILED DESIGN for the installation of air-conditioning systems, in compliance with the applicable technical standards and current legislation.
- 10.5.32.** The selection of air-conditioning equipment to be installed shall be guided by the Brazilian Labeling Program (PBE) of INMETRO, aiming at the optimization of energy consumption and the sustainability of the project.
- 10.5.33.** The CONCESSIONAIRE shall, for all EDUCATIONAL UNITS, provide for the maintenance and organization of the existing condition of ceilings in the internal areas of the buildings. Whether slab or suspended ceiling, the condition shall be maintained or restored, as necessary. Existing ceilings may be maintained by the CONCESSIONAIRE, provided they are in adequate condition, with no damp, broken, or deformed panels; otherwise, such panels shall be replaced.

- 10.5.34.** The facades of the EDUCATIONAL UNITS shall be maintained, which implies preserving the predominant color of their structure. Units that have already received painting on their structure may receive new painting. Units that retain the originality of exposed brickwork and concrete shall receive maintenance and protection through products suitable for this purpose.
- 10.5.35.** With regard to aluminum frames and brise-soleils, these elements shall undergo an intensive revitalization process, including the replacement of damaged parts or components with a deteriorated appearance, in order to restore their originality and full functionality.
- 10.5.36.** The air-conditioning equipment to be installed inside the schools shall have the condenser units located immediately outside each respective environment and shall be centralized, with standardized installation across all units. Their piping shall not be clad and shall be as visually discreet as possible. The locations shall be previously defined by the CONCESSIONAIRE, in coordination with the GRANTING AUTHORITY.
- 10.5.37.** It is mandatory for the CONCESSIONAIRE to ensure the watertightness of the facades (absence of leaks), in accordance with ABNT NBR 15575-4 – Residential buildings — Performance — Part 4: Internal and external vertical enclosure systems.
- 10.5.38.** Finally, the preservation of the aesthetic quality, structural integrity, and functionality of the facades of the EDUCATIONAL UNITS is mandatory.

Reference illustration of a façade painting



Source: Not defined.

**PROCESS No. 1260.01.0235354/2025-76  
INTERNATIONAL TENDER No. 001/2026  
SCHOOL INFRASTRUCTURE PPP**

Reference illustration of façade painting – TYPOLOGY B



Source: Not defined.

Reference illustration of façade painting – TYPOLOGY C



Source: Not defined.

Reference illustration of façade painting – TYPOLOGY D



Source: Not defined.

**10.5.39.** With respect to roofs, the CONCESSIONAIRE shall carry out the necessary maintenance of roofing tiles and structural elements in order to ensure full watertightness and, in the case of products containing asbestos, shall perform their complete replacement. The roof renovation and adaptation project shall include: (i) the selection of materials alternative to asbestos, with adequate thermal and acoustic performance and in compliance with environmental and public health standards; and (ii) the preparation of a waste management plan, ensuring the safe removal and disposal of existing asbestos roofing tiles, in accordance with applicable environmental legislation.

**10.5.40.** The CONCESSIONAIRE shall also assess the existing supporting structure. The assessment to be carried out must be capable of attesting to the structure's capacity to support new materials, considering aspects such as strength, durability, and compatibility with the proposed replacement solutions. If the existing structures do not meet safety, stability, or technical compatibility criteria, the CONCESSIONAIRE shall implement corrective interventions, which may range from partial refurbishments aimed at reinforcing or replacing specific compromised elements to the total reconstruction of the supporting structure, ensuring that the new roofing is installed on a solid base and in compliance with the applicable technical specifications

#### Internal Areas

**10.5.41.** The EDUCATIONAL UNITS are old buildings with a considerable level of structural and infrastructure degradation. Therefore, the elements present within these areas require a complete maintenance renovation.

**10.5.42.** Although the built area is already previously defined, the internal layouts and dimensions may be modified to ensure the best use of each EDUCATIONAL UNIT. Below are the mandatory facilities and their respective reference dimensions, which shall be considered by the CONCESSIONAIRE:

Mandatory Facilities	Reference Dimensions
<b>Accesses, Circulation and Covered Courtyard</b>	Average of 200 to 300 m <sup>2</sup> for every 6 classrooms; access and circulation already established within the UNITS; minimum of 300 m <sup>2</sup> for courtyards, except in EDUCATIONAL UNITS where expansion is not feasible.
<b>Stairways and Access Ramps</b>	Stairways and Access Ramps
<b>Classrooms</b>	42 m <sup>2</sup> per classroom (in existing units, optimize use according to existing floor areas).
<b>Library</b>	Average of 80 m <sup>2</sup> for up to 15 classrooms.
<b>Laboratory</b>	Average of 80 m <sup>2</sup> for up to 24 classrooms.
<b>Storage Rooms</b>	Average of 10 to 25 m <sup>2</sup> per floor, which may be subdivided.
<b>Cafeteria / Refectory</b>	Average of 200 m <sup>2</sup> for up to 12 classrooms; 230 m <sup>2</sup> for up to 24 classrooms.
<b>Kitchen and Technical Support Area</b>	Average of 80 m <sup>2</sup> for up to 18 classrooms; 120 m <sup>2</sup> for up to 24 classrooms.
<b>Secretary's Office and Administrative Area</b>	Average of 80 to 120 m <sup>2</sup> .

**10.5.43.** The CONCESSIONAIRE shall ensure accessibility in access points and circulation throughout the entire area of the EDUCATIONAL UNITS, in compliance with the applicable regulatory standards in force.

Accesses, Circulation and Courtyards

**10.5.44.** Internal circulation in the EDUCATIONAL UNITS is already architecturally established. However, it shall be the responsibility of the CONCESSIONAIRE to add roofing along the route between the main access gate

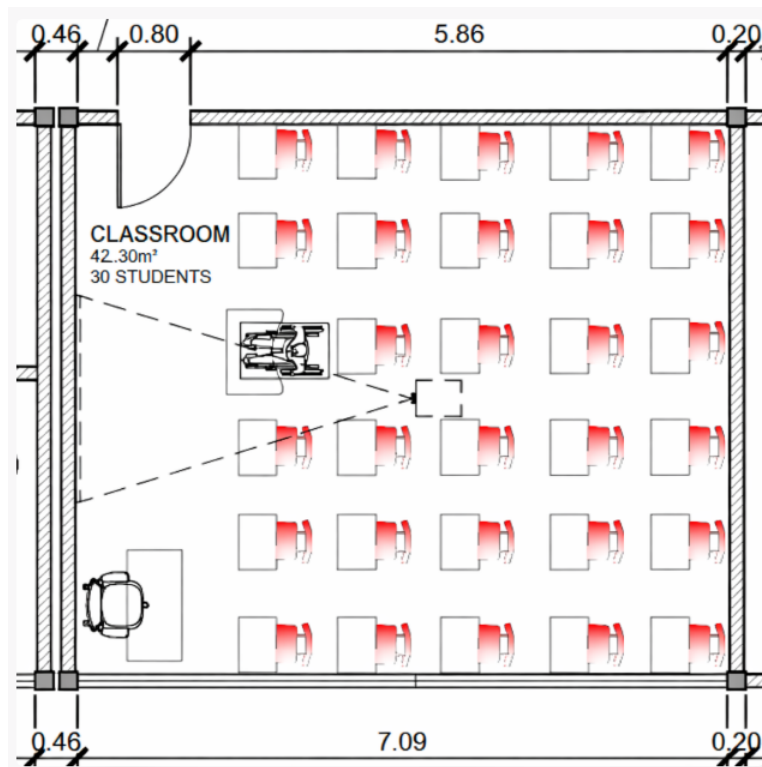
to the EDUCATIONAL UNIT SITE and the main building, as well as along the connections between buildings.

**10.5.45.** Internally, corridors and courtyards shall have a layout that includes benches and vegetation in plastic planters (cachepots), as indicated in EXHIBIT C – FURNITURE AND EQUIPMENT SPECIFICATIONS.

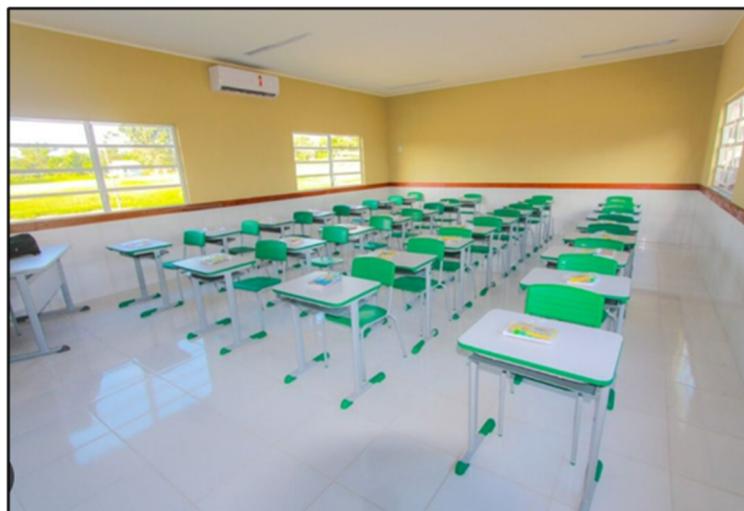
**10.5.46.** The courtyards are located at ground level of the EDUCATIONAL UNITS. These areas shall have a minimum reference area of 300 m<sup>2</sup>. The courtyard know-out shall be designed in accordance with universal accessibility parameters, ensuring safe circulation free from architectural barriers, and including the installation of accessible drinking fountain points, in compliance with the applicable legislation, in particular ABNT NBR 9050 (Accessibility to buildings, furniture, urban spaces and equipment) and other applicable technical standards.

#### Classrooms and Restrooms

**10.5.47.** For classrooms intended for elementary education, the reference size ranges from 30 m<sup>2</sup> to 50 m<sup>2</sup> and is intended to accommodate 25 to 40 students. As the project concerns the refurbishment of schools, priority shall be given to maintaining existing areas, favoring those with larger floor areas; however, areas below the stipulated minimum shall be reassessed. As with all school environments, classrooms must ensure accessibility.



Reference classroom layout with accessibility



Illustrative guidance

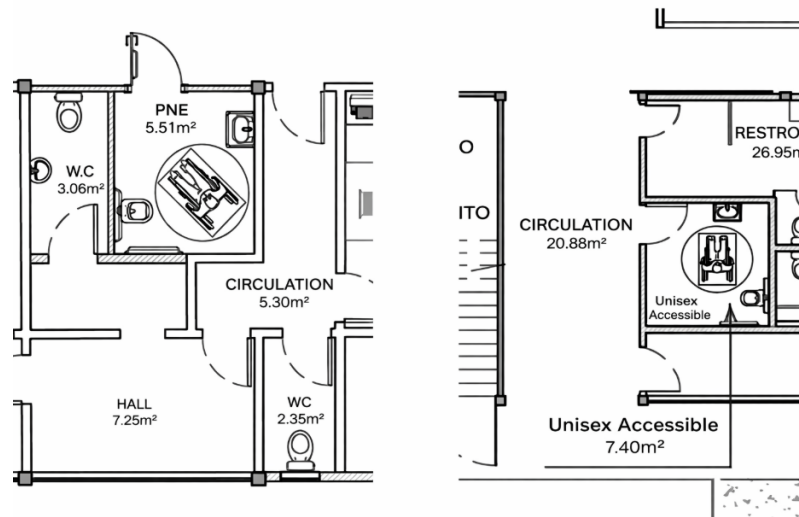
**10.5.48.** The quantities, as well as the models of desks, tables, cabinets, and other classroom items, are specified in ANNEX C – FURNITURE AND EQUIPMENT SPECIFICATIONS.

**10.5.49.** The sizing and dimensions of classrooms should, whenever possible, be maintained according to the existing conditions, except where an internal layout change is required to incorporate other environments within the school building, in accordance with the provisions of the conceptual studies.

**10.5.50.** Currently, the restrooms do not meet or comply with accessibility standards in accordance with NBR 9050 (Accessibility to buildings, furniture, urban spaces, and equipment), which requires the CONCESSIONAIRE to carry out full adaptation of these spaces.

**10.5.51.** It is mandatory that all floors of the building include restrooms for persons with disabilities of both sexes, and, in addition, restroom doors facing cafeterias must be avoided, in accordance with ANVISA guidelines.

**10.5.52.** For EDUCATIONAL UNITS that do not have sufficient space to install an accessible stall, it will be necessary to reconfigure the adjacent area and create a new exclusive restroom intended for persons with disabilities. The image below serves as a reference for this situation.



**10.5.53.** It is also desirable to implement an exclusive lavatory for staff use. This constitutes an additional infrastructure item that should be provided on all floors of the EDUCATIONAL UNITS, whenever feasible. Any non-implementation shall be duly justified and approved.

### Library and Laboratories

**10.5.54.** The library and laboratories shall mandatorily be located within the main building, due to the value of the equipment allocated therein. Each of these facilities shall have an average area equivalent to two classrooms or a minimum space sufficient to accommodate 40 seated users. It is noted that,

depending on the availability of internal space in the main building of each EDUCATIONAL UNIT, this reference dimension may be reduced, provided that it is duly justified by the CONCESSIONAIRE in the presentation of the BASIC DESIGN and DETAILED DESIGN. These Guidelines apply both to existing environments and to the construction of new schools, within the scope of the CONTINGENT INVESTMENTS clause of the AGREEMENT.



Reference layout for library and laboratories

**10.5.55.** The computer laboratory is a technology-focused environment. Its group tables may adopt varied formats, including bench-type layouts, in order to promote more dynamic classes. Wall-mounted countertops are required to complement space occupation and functional zoning.

**10.5.56.** The science laboratory is an environment dedicated to practical studies. Its high benches allow for better circulation and movement during activities. The

entire construction system shall be designed to ensure ease of maintenance, cleaning, organization, and safety.

**10.5.57.** The quantitative detailing, as well as the models of equipment and items, are specified in EXHIBIT C – FURNITURE AND EQUIPMENT SPECIFICATIONS.

Cafeteria, Kitchen and Support Areas

**10.5.58.** The CONCESSIONAIRE shall comply with the guidelines of the Model Project of the State of Minas Gerais for kitchens and cafeterias, ensuring that all adaptations fully meet the requirements of the Health Surveillance Authority. In particular, kitchens shall be adapted in accordance with the following criteria:

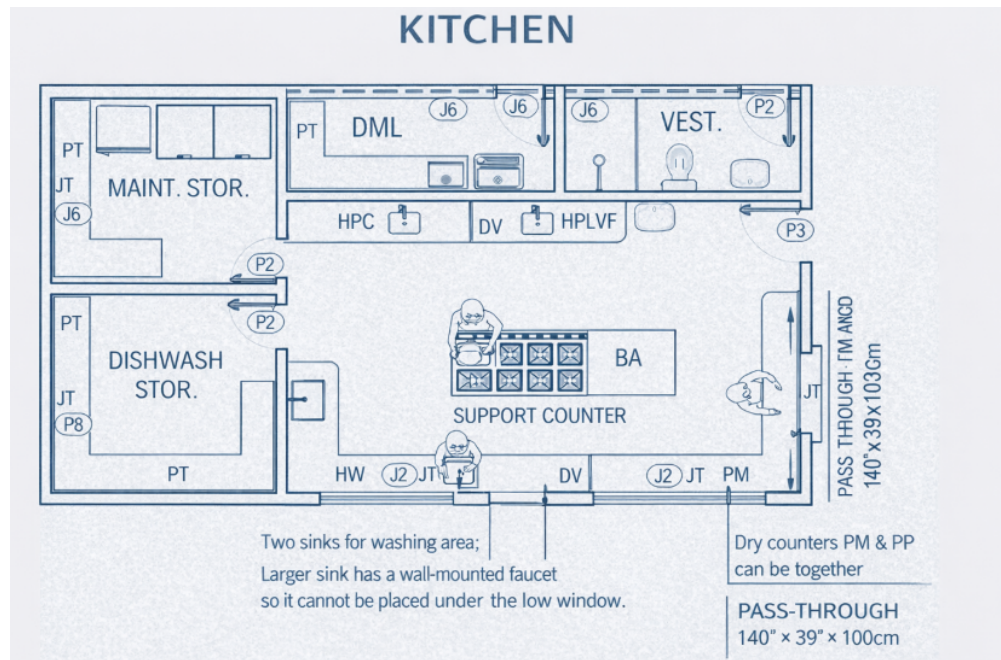
- The kitchen shall have a size compatible with the school’s student demand, with a minimum area of 20 m<sup>2</sup>;
- Floors and walls shall be impermeable, resistant, washable, and slip-resistant;
- Where there is no concrete slab, the installation of a ceiling/lining is mandatory;
- Grease traps (from sink wastewater) shall be provided and separated from the sanitary sewer system originating from restrooms (inspection boxes);
- The kitchen shall include **one countertop for each type of use**, which shall be properly identified with the corresponding codes:

HPLVF	Cleaning and Preparation of Vegetables, Leafy greens and Fruits	1 Sink
HPC	Cleaning and Preparation of Meats	1 Sink
HV	Cleaning of Containers and Utensils	1 Regular Sink and 1 Large Sink
PM	Preparation of Pasta	Dry Counter
BA	Support Counter (extra counter)	Dry Counter
PP	Kitchen pass-through	Dry Counter

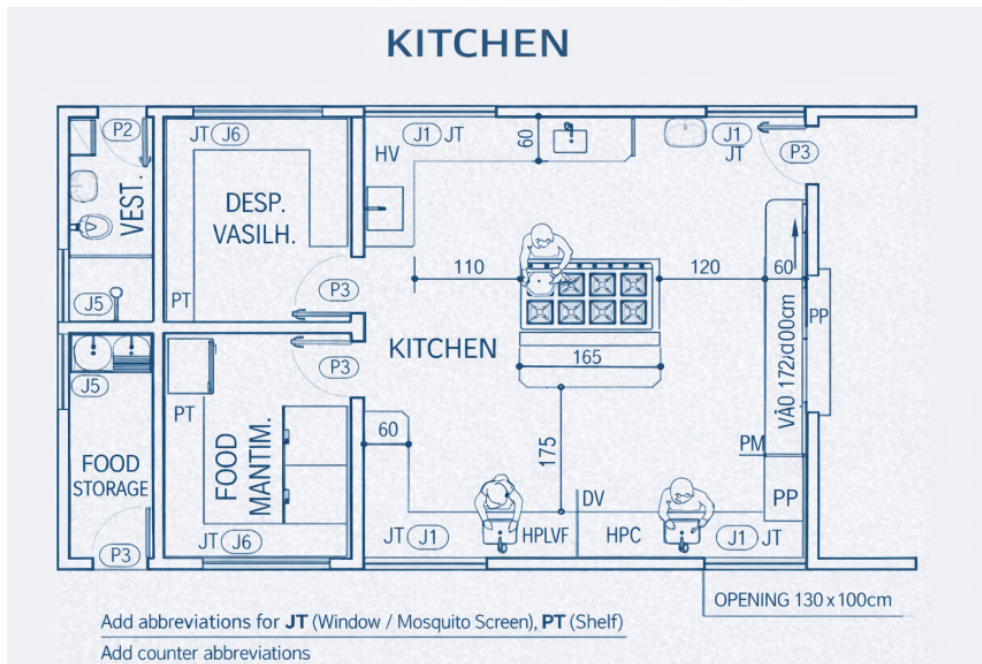
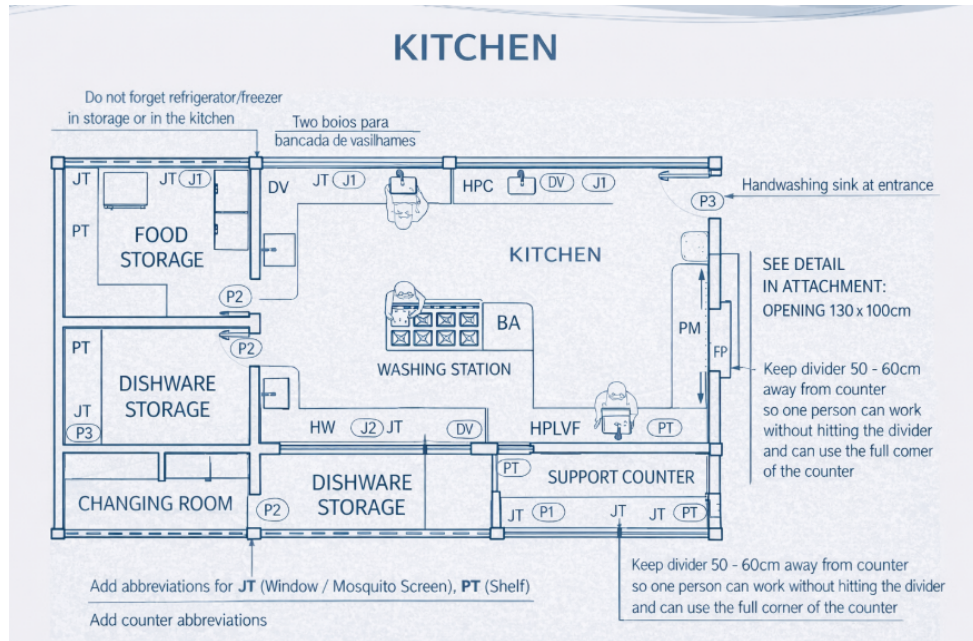
PROCESS No. 1260.01.0235354/2025-76  
INTERNATIONAL TENDER No. 001/2026  
SCHOOL INFRASTRUCTURE PPP

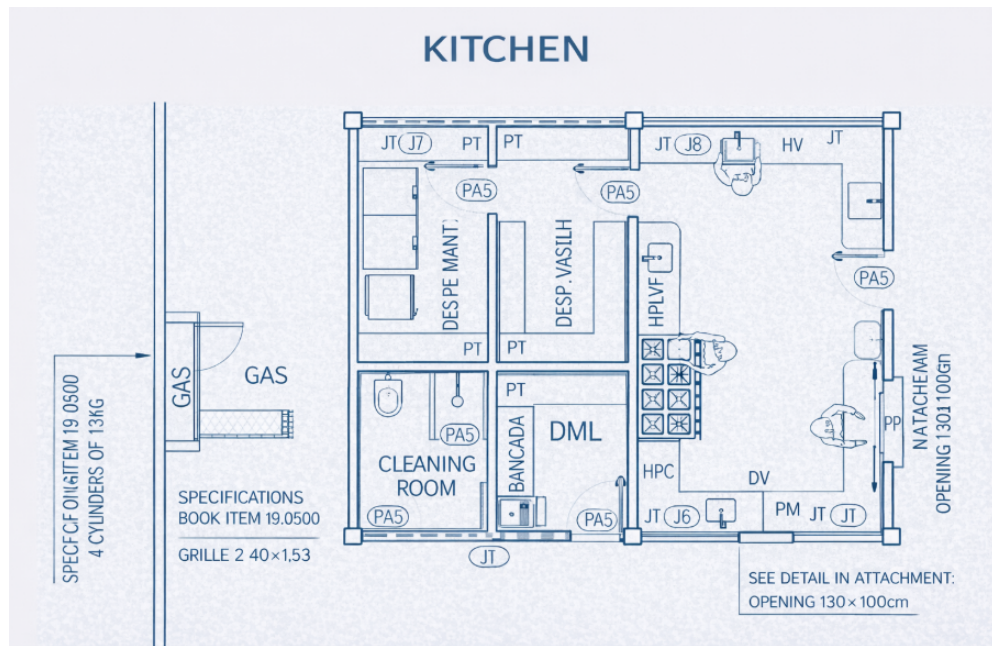
- Countertops shall be separated or partitioned using dividers made of the same countertop material, with a minimum height of 10 cm;
- No windows or doors from the DML (Janitorial Room) or Locker Rooms may open directly into the cafeteria;
- Windows shall be oriented to the exterior;
- When it is not possible to provide both pantries with doors opening directly into the kitchen, circulation may be allowed from the Utensil Pantry to the Food Pantry, never the reverse;
- A lower pass-through countertop may be used to support large cooking pots;
- Countertops and partitions shall be made of granite; the use of slate is not permitted.

**10.5.59.** Below are some layout suggestions, considering different standards of state schools in Minas Gerais and alignment with ANVISA requirements, including the sanitization area.



**PROCESS No. 1260.01.0235354/2025-76  
INTERNATIONAL TENDER No. 001/2026  
SCHOOL INFRASTRUCTURE PPP**

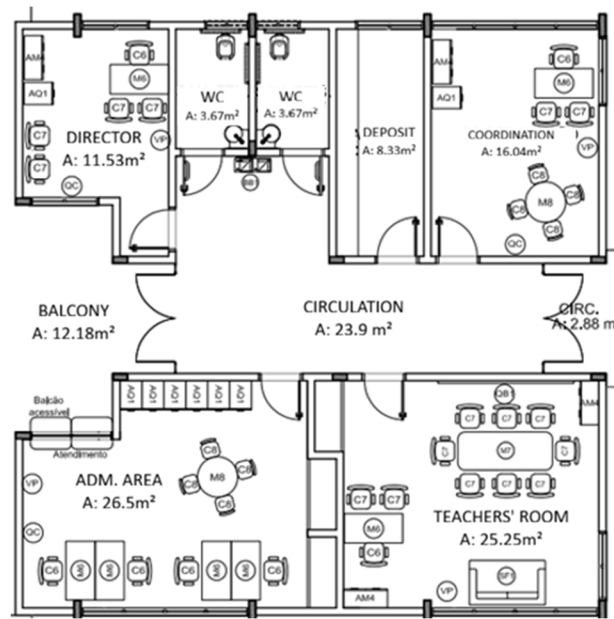




### Secretariat and Administrative Areas

- 10.5.60.** The Secretariat and Administrative Areas, under the Model Project of the State of Minas Gerais, have a standardized layout in the EDUCATIONAL UNITS that serve Elementary Education and Secondary Education. The CONCESSIONAIRE shall be responsible for carrying out the refurbishment and requalification of these areas, whenever feasible. All finishes and infrastructure elements that are in poor condition or inadequate for use shall be replaced or renewed, in accordance with the provisions set forth in this WORKS SPECIFICATIONS HANDBOOK.

PROCESS No. 1260.01.0235354/2025-76  
INTERNATIONAL TENDER No. 001/2026  
SCHOOL INFRASTRUCTURE PPP



**10.5.61.** The Administrative Area shall include a pantry intended exclusively for its users, ensuring a balanced distribution of spaces. Some schools have oversized administrative areas, and part of their floor area may be reallocated to other uses. This assessment shall consider the previously recommended floor areas and shall be subject to approval by the GRANTING AUTHORITY.

## 11. RELOCATION SCENARIOS AND TEMPORARY OPERATION OF EDUCATIONAL UNITS DURING THE EXECUTION OF WORKS

**11.1.** The refurbishment works at the EDUCATIONAL UNITS shall be carried out according to a RELOCATION SCENARIO classification, which shall be assigned to each EDUCATIONAL UNIT as indicated in the "Relocation Scenario" column of the table listing the EDUCATIONAL UNITS included in EXHIBIT D – LIST OF UNITS AND DESCRIPTIVE MEMORANDUM.

**11.1.1.** The provisions related to each of the RELOCATION SCENARIOS set forth in this EXHIBIT A – SCHEDULE OF RESPONSIBILITIES FOR WORKS shall be applied to each EDUCATIONAL UNIT according to its respective allocation among the RELOCATION SCENARIOS, as indicated in subitem 11.1.

**11.2.** The provisions of the RELOCATION SCENARIOS, described in items 11.3, 11.4, 11.5 e 11.6, are intended to ensure the continuity of a minimum infrastructure for the performance of pedagogical activities, with the least possible impact on the school

routine. Whenever feasible, students shall be kept within the same EDUCATIONAL UNIT, using solutions such as isolating the construction areas or installing TEMPORARY STRUCTURES within the school premises.

**11.3. INTERNAL RELOCATION SCENARIO:** The GRANTING AUTHORITY shall use the existing spaces within the respective EDUCATIONAL UNIT to accommodate students during the execution of renovation works, and shall be responsible for approving the RELOCATION PLANS submitted by the CONCESSIONAIRE for each EDUCATIONAL UNIT.

**11.3.1.** The CONCESSIONAIRE shall prepare and submit the internal RELOCATION PLAN, to be implemented during the WORKS STAGE, for approval by the GRANTING AUTHORITY, with the support of the INDEPENDENT VERIFIER, in compliance with the standards and other elements, deadlines, and conditions set forth in this EXHIBIT, as well as the following guidelines for its preparation and execution, in order to enable the coexistence of school operations and construction activities:

- 11.3.1.1.** Physical isolation of the intervention areas, with structured barriers, safety signage, segregated routes, and visual and acoustic screening;
- 11.3.1.2.** Temporary relocation of school spaces, with alternative use of administrative and pedagogical areas, in compliance with maximum capacity limits and safety standards;
- 11.3.1.3.** Assessment of the existence of idle classrooms that are not currently in use, which, if identified, shall be prioritized for the temporary relocation of pedagogical activities during the execution of the works;
- 11.3.1.4.** Adaptation of temporary internal furniture and infrastructure, ensuring thermal comfort, acoustic comfort, and accessibility;
- 11.3.1.5.** Continuous technical monitoring of the interface between construction activities and school operations, with safety protocols and contingency plans approved by the Department of Education;
- 11.3.1.6.** Integrated communication and periodic alignment meetings with the school teams, the Department of Education, and the technical staff of the CONCESSIONAIRE, ensuring the smooth progression of the execution phases and compliance with the contractual milestones;
- 11.3.1.7.** Specifically with respect to kitchen areas, the CONCESSIONAIRE shall prioritize the execution of renovation works during the school recess period

and, where applicable, shall structure such works so as to minimize interference with the regular operation of the EDUCATIONAL UNITS. If the execution of the renovations cannot be carried out in full during the school recess period for technical or operational reasons, the CONCESSIONAIRE shall present an alternative solution, including, but not limited to, the adaptation and temporary use of another existing space or the mobilization and implementation of a TEMPORARY STRUCTURE, which shall be previously presented and submitted for approval by the GRANTING AUTHORITY, in order to ensure adequate service to the unit with a minimum provisional kitchen infrastructure while works are being carried out in the original kitchen space.

**11.3.1.7.1.** It is emphasized that, in all scenarios — regardless of the phase assigned or the solution adopted — the guidelines and requirements applicable to kitchens shall be fully observed, ensuring technical, operational, and contractual compliance.

**11.3.2.** The CONCESSIONAIRE shall carry out the RELOCATION of all Equipment and Furniture from each area undergoing works to a temporary area, as well as the RELOCATION of such items back to their original area upon completion of the works in that area, in accordance with the internal RELOCATION PLAN and the WORKS IMPLEMENTATION PLAN, as approved for each EDUCATIONAL UNIT during the PRE-WORK STAGE.

**11.3.3.** The GRANTING AUTHORITY shall carry out the RELOCATION of pedagogical activities and of the EDUCATIONAL COMMUNITY from each area undergoing works to a temporary area, as well as the RELOCATION back to the original area upon completion of the works in that area, in accordance with the internal RELOCATION PLAN and the WORKS IMPLEMENTATION PLAN, as approved for each EDUCATIONAL UNIT during the PRE-WORK STAGE.

**11.4.** RELOCATION SCENARIO TO A SHARED TEMPORARY STRUCTURE: The CONCESSIONAIRE shall be responsible for providing the installation and maintenance of a TEMPORARY STRUCTURE within the premises of the EDUCATIONAL UNIT itself, which, once the refurbishment works are completed, shall be dismantled and reassembled on the premises of another EDUCATIONAL UNIT, in accordance with the table below. This configuration characterizes the structure as a shared facility, and the CONCESSIONAIRE shall bear all costs arising from its mobilization, maintenance, and demobilization:

**PROCESS No. 1260.01.0235354/2025-76  
INTERNATIONAL TENDER No. 001/2026  
SCHOOL INFRASTRUCTURE PPP**

EDUCATIONAL UNIT SHARING TEMPORARY STRUCTURE	MUNICIPALITY	EDUCATIONAL UNIT SHARING TEMPORARY STRUCTURE	MUNICIPALITY
Conselheiro Afonso Pena	Betim	João Paulo I	Betim
Reny de Souza Lima	Santa Luzia	José Maria Bicalho	Santa Luzia
José Luiz Gonzaga Ferreira	Sabar	Prof. Leopoldo de Miranda	Belo Horizonte

**11.4.1.** The dimensioning and distribution of the TEMPORARY STRUCTURES shall consider:

**11.4.1.1.** Classrooms, sanitary facilities, refectory, administrative area and support spaces;

**11.4.1.2.** Accessibility and safe circulation;

**11.4.1.3.** Temporary water, power and sewage connections, in accordance with applicable technical standards;

**11.4.1.4.** Continuity of pedagogical activities;

**11.4.1.5.** Safety of students and professionals;

**11.4.1.6.** Physical separation between the construction area and the school-use area.

**11.4.2.** The CONCESSIONAIRE shall carry out the RELOCATION of all Equipment and Furniture of the EDUCATIONAL UNIT to the TEMPORARY STRUCTURE, in accordance with the WORKS IMPLEMENTATION PLAN, approved for each EDUCATIONAL UNIT, in the PRE-WORKS STAGE.

**11.4.3.** The GRANTING AUTHORITY shall carry out the RELOCATION of pedagogical activities and of the EDUCATIONAL COMMUNITY of the EDUCATIONAL UNIT to the TEMPORARY STRUCTURE, in accordance with the WORKS IMPLEMENTATION PLAN, approved for each EDUCATIONAL UNIT, in the PRE-WORKS STAGE, so that the execution of the refurbishment works is carried out with the EDUCATIONAL UNIT vacated.

**11.4.3.1.** In order to provide operational flexibility to the execution of the works, the CONCESSIONAIRE is authorized to propose the implementation of a TEMPORARY STRUCTURE sized to partially serve the EDUCATIONAL UNIT, in a quantity lower than that required for the entire school, in which case the EDUCATIONAL UNIT may be partially vacated.

**11.4.3.2.** In this situation, the CONCESSIONAIRE shall present a specific technical solution, accompanied by the respective RELOCATION PLAN, in order to demonstrably ensure adequate safety conditions for the school community, as well as the continuity of the authorized activities, with its adoption being subject to the prior approval of the GRANTING AUTHORITY.

**11.4.3.3.** With respect to the kitchen areas, the same provisions of the items 11.3.1.7 and 11.3.1.7.1 shall apply.

**11.4.4.** On the date established in the NOTICE TO PROCEED, for the commencement of the provision of SERVICES at each EDUCATIONAL UNIT, the GRANTING AUTHORITY shall carry out the relocation of the pedagogical activities and of the EDUCATIONAL COMMUNITY from the respective TEMPORARY STRUCTURE, where they were temporarily allocated, back to the respective EDUCATIONAL UNIT.

**11.4.5.** After the EDUCATIONAL UNIT in which the TEMPORARY STRUCTURE was installed enters OPERATION, as per the previous subclause, the GRANTING AUTHORITY shall carry out the removal of the Equipment and Furniture from the TEMPORARY STRUCTURE, so that the CONCESSIONAIRE may dismantle it. After the removal of the Equipment and Furniture from the Shared TEMPORARY STRUCTURE of the first EDUCATIONAL UNIT in which it was installed, and after its dismantling, the CONCESSIONAIRE shall reassemble it on the site of the second EDUCATIONAL UNIT for which it was designated, as defined in EXHIBIT D – LIST OF UNITS AND DESCRIPTIVE MEMORIAL.

**11.5.** RELOCATION SCENARIO TO A DEDICATED TEMPORARY STRUCTURE: the CONCESSIONAIRE shall provide for the installation and maintenance of a TEMPORARY STRUCTURE on the site itself (sports court or open area) of the EDUCATIONAL UNITS, with the purpose of accommodating students during the renovation period, thus characterizing it as a dedicated TEMPORARY STRUCTURE.

**11.5.1.** The same obligations of the CONCESSIONAIRE and the GRANTING AUTHORITY set forth in items 11.3.1, 11.3.1.7, 11.3.1.7.1, 11.4.1 and its subitems, 11.4.2, 11.4.3 and 11.4.4.

**11.6.** RELOCATION SCENARIO TO A PARTIAL TEMPORARY STRUCTURE: the CONCESSIONAIRE shall provide for the installation and maintenance of a Partial

TEMPORARY STRUCTURE on the premises of the EDUCATIONAL UNIT, with capacity smaller than the number of classrooms of the EDUCATIONAL UNIT, and a sanitary module may be required, with the purpose of accommodating students during the renovation period, in phases, thus characterizing a partial TEMPORARY STRUCTURE. The CONCESSIONAIRE shall bear the costs arising from its mobilization, maintenance, and demobilization.

**11.6.1.** The CONCESSIONAIRE shall prepare and submit the RELOCATION Plan between the EDUCATIONAL UNIT and the Partial TEMPORARY STRUCTURE, to be executed during the WORKS STAGE, for approval by the GRANTING AUTHORITY, with the support of the INDEPENDENT VERIFIER, in compliance with the standards, guidelines, and other mandatory elements, within the deadlines and conditions set forth in this EXHIBIT.

**11.6.1.1.** The same obligations of the CONCESSIONAIRE and the GRANTING AUTHORITY shall apply, as set forth in items 11.3.1, 11.3.1.5, 11.3.1.6, 11.3.1.7, 11.3.1.7.1, 11.4.1, 11.4.1.4, 11.4.1.5, 11.4.1.6, 11.4.2, 11.4.3 and 11.4.4.

**11.6.2.** The CONCESSIONAIRE shall carry out the RELOCATION of all Equipment and Furniture of each area that will undergo Works to the PARTIAL TEMPORARY STRUCTURE, as well as carry out their RELOCATION back to the original area upon completion of the Works in that area, in accordance with the RELOCATION PLAN and the WORKS IMPLEMENTATION PLAN, approved for each EDUCATIONAL UNIT, in the PRE-WORKS STAGE.

**11.6.3.** The GRANTING AUTHORITY shall carry out the RELOCATION of pedagogical activities and of the EDUCATIONAL COMMUNITY of each area that will undergo Works to the PARTIAL TEMPORARY STRUCTURE, as well as carry out their RELOCATION back to the original area upon completion of the Works in that area, in accordance with the RELOCATION PLAN and the WORKS IMPLEMENTATION PLAN, approved for each EDUCATIONAL UNIT, in the PRE-WORKS STAGE.

**11.6.4.** After the start of OPERATION of the UNIT in which the TEMPORARY STRUCTURE was installed, the GRANTING AUTHORITY shall carry out the removal of the Equipment and Furniture from the Partial TEMPORARY STRUCTURE, so that the CONCESSIONAIRE may dismantle it.

**11.7.** The allocation of the EDUCATIONAL UNITS to one of the RELOCATION SCENARIOS referred to in subclauses 11.1 to 11.4 may be reviewed, on a case-by-case basis and with proper technical justification, if supervening circumstances are identified that make the maintenance of the originally assigned RELOCATION SCENARIO unfeasible or inappropriate from a technical, operational, or economic-financial standpoint, thereby allowing its reclassification and, if applicable, the application of the provisions related to economic-financial rebalancing, under the terms and limits established in this AGREEMENT.

**11.7.1.** Any eventual reclassification of the RELOCATION SCENARIO assigned to any of the EDUCATIONAL UNITS may be proposed by either PARTY, upon submission of a technical report substantiating the impossibility or inconvenience of maintaining the originally established scenario and proposing the applicable alternative.

**11.7.2.** In cases where the proposal for reclassification of the RELOCATION SCENARIO of any of the EDUCATIONAL UNITS originates from the CONCESSIONAIRE, its adoption shall be subject to the prior approval of the GRANTING AUTHORITY, which may request clarifications or additional information before deciding on the reclassification.

**11.7.3.** In cases where the proposal for reclassification of the RELOCATION SCENARIO of any of the EDUCATIONAL UNITS originates from the GRANTING AUTHORITY, a period of 10 (ten) days shall be granted for the CONCESSIONAIRE to comment on the technical and economic feasibility of such request.

**11.7.3.1.** If the CONCESSIONAIRE understands that it is not feasible to adopt such proposal, the GRANTING AUTHORITY shall assess the relevance of such considerations and, if it agrees with the CONCESSIONAIRE, shall implement the necessary adjustments to enable the change, including the possibility of contractual economic-financial rebalancing, or, as a last resort, shall suspend its request.

**11.7.3.2.** If the GRANTING AUTHORITY does not agree with the points raised by the CONCESSIONAIRE, its position shall be justified and set forth within a maximum period of 10 (ten) days.

**11.7.3.3.** In the event of disagreement by the GRANTING AUTHORITY regarding the points presented by the CONCESSIONAIRE concerning the reclassification proposed by the GRANTING

AUTHORITY itself, the matter shall be submitted to the evaluation of the INDEPENDENT VERIFIER, who shall analyze the proposal of the GRANTING AUTHORITY and the points raised by the CONCESSIONAIRE, issuing a technical opinion intended to support the final decision of the GRANTING AUTHORITY.

**11.7.3.4.** The opinion of the INDEPENDENT VERIFIER shall serve as technical support for the reassessment of the positions by the PARTIES, with the final decision regarding the reclassification resting with the GRANTING AUTHORITY.

**11.8.** Any reclassification of the RELOCATION SCENARIO of any of the EDUCATIONAL UNITS shall not alter the allocation of responsibilities between the PARTIES, as established in this clause and throughout this AGREEMENT, which shall remain valid even in cases of approved reclassification. All costs and charges arising from the mobilization, maintenance, and demobilization of the TEMPORARY STRUCTURES shall be borne by the CONCESSIONAIRE, except for any occurrences attributable to the GRANTING AUTHORITY, in accordance with the provisions of EXHIBIT J – RISK ALLOCATION MATRIX.

**11.9.** The collection of all Equipment and Furniture replaced by the CONCESSIONAIRE in the EDUCATIONAL UNITS, as provided for in EXHIBIT C – FURNITURE AND EQUIPMENT SPECIFICATIONS, as well as their transportation and final disposal, shall be the exclusive responsibility of the GRANTING AUTHORITY, including all related costs and charges, in accordance with the WORKS IMPLEMENTATION PLAN approved for each EDUCATIONAL UNIT during the PRE-WORK STAGE.

**11.10.** If the GRANTING AUTHORITY fails to remove the Equipment and Furniture replaced within 15 (fifteen) days from receipt of the notification from the CONCESSIONAIRE, the CONCESSIONAIRE shall be authorized to use a location outside the CONCESSION AREA for the storage of the replaced Equipment and Furniture, with the economic-financial balance to be restored for the costs duly evidenced and incurred by the CONCESSIONAIRE.

## **12. ASSISTED OPERATION**

- 12.1.** Assisted Operation for each EDUCATIONAL UNIT under the INTERNAL RELOCATION SCENARIO, the CONCESSIONAIRE and the GRANTING AUTHORITY shall carry out the ASSISTED OPERATION period, intended for the adoption of the necessary measures to effect the transfer of the SERVICES subject to the AGREEMENT to the CONCESSIONAIRE. Such period shall take place within the PRE-WORK STAGE, as provided for in the WORKS IMPLEMENTATION PLAN, with the effective duration to be defined by mutual agreement between the PARTIES throughout its execution.
- 12.1.1.** During the ASSISTED OPERATION period, the SERVICES subject to the AGREEMENT shall remain operated exclusively under the responsibility of the GRANTING AUTHORITY, with the CONCESSIONAIRE limited to monitoring such operation.
- 12.1.2.** The CONCESSIONAIRE shall indicate to the GRANTING AUTHORITY, no later than 3 (three) days prior to the Scheduled Date for the start of the ASSISTED OPERATION period of each EDUCATIONAL UNIT, the name and full identification of the employees responsible for monitoring the operational routine of each EDUCATIONAL UNIT, and no later than 3 (three) days prior to the scheduled date for the start of the PRE-WORKS STAGE, the name and full identification of the employees responsible for carrying out any inspections that may be necessary for the preparation of the WORKS IMPLEMENTATION PLAN.
- 12.1.3.** The GRANTING AUTHORITY shall designate and instruct its employees, agents and public servants responsible for accompanying the CONCESSIONAIRE's employees in the activities carried out during the ASSISTED OPERATION period, enabling the CONCESSIONAIRE to become familiar with all administrative, financial, operation and maintenance functions of the EDUCATIONAL UNITS, as well as their routines, regulations, materials management, asset management, service orders, schedules, and related procedures.
- 12.2.** In order not to affect the CONCESSIONAIRE's management, the GRANTING AUTHORITY undertakes, as from the AGREEMENT SIGNING DATE, not to perform any act that may create or modify rights or obligations extending beyond the ASSISTED OPERATION period, without first submitting them to the prior and express approval of the CONCESSIONAIRE.

INVENTORY OF EXISTING ASSETS AND LISTING OF REVERSIBLE ASSETS

**12.3.** During the PRE-WORK STAGE, the CONCESSIONAIRE and the GRANTING AUTHORITY shall carry out an inspection of the assets comprising the existing EDUCATIONAL UNITS. Within a period of up to 45 (forty-five) days, counted from the date of issuance of the ORDER TO COMMENCE THE AGREEMENT, the CONCESSIONAIRE shall review the INVENTORY OF PRE-EXISTING FURNITURE AND EQUIPMENT of the respective EDUCATIONAL UNIT, as submitted by the GRANTING AUTHORITY, and may, at its discretion, prepare its own survey, identifying any inconsistencies and REVERSIBLE ASSETS, for the purpose of identifying and describing the existing assets for which it exclusively assumes responsibility for movement between environments within the EDUCATIONAL UNIT, or to a TEMPORARY STRUCTURE, during the execution of the works, with the maintenance and operation of such assets remaining under the exclusive responsibility of the GRANTING AUTHORITY until their replacement.

**12.3.1.** If no inconsistencies are presented by the CONCESSIONAIRE regarding the INVENTORY OF PRE-EXISTING FURNITURE AND EQUIPMENT related to the EDUCATIONAL UNIT within the period indicated in Clause 12.3 , it shall be deemed that the CONCESSIONAIRE fully ratifies the INVENTORY OF PRE-EXISTING FURNITURE AND EQUIPMENT submitted by the GRANTING AUTHORITY for the respective EDUCATIONAL UNIT.

**12.3.2.** The existing Furniture and Equipment shall be fully replaced and returned to the GRANTING AUTHORITY, in accordance with the provisions set forth in EXHIBIT C – FURNITURE AND EQUIPMENT SPECIFICATIONS and in the FURNITURE AND EQUIPMENT PLAN.

**12.4.** Within up to 30 (thirty) days after the issuance of the NOTICE TO PROCEED for each EDUCATIONAL UNIT, the CONCESSIONAIRE shall submit the REVERTIBLE ASSETS LISTING INSTRUMENT for the respective Unit, which formalizes the transfer to the CONCESSIONAIRE of responsibility for the possession, custody, surveillance, and maintenance of the REVERSIBLE ASSETS.

**12.4.1.** The REVERTIBLE ASSETS LISTING INSTRUMENT shall also expressly indicate any existing furniture and equipment that are in adequate conditions of use and that, at the request of the GRANTING AUTHORITY, will not be replaced

or removed, and shall be used by the CONCESSIONAIRE for the provision of the SERVICES.

**12.4.1.1.** The CONCESSIONAIRE shall not be subject to penalties or performance deductions arising exclusively from the use of furniture and equipment whose use has been determined by the GRANTING AUTHORITY, pursuant to the previous subclause, without prejudice to its responsibility for the maintenance and conservation of the REVERSIBLE ASSETS as provided for in subclause 54.2 of the AGREEMENT.

**12.4.2.** After the preparation of the REVERTIBLE ASSETS LISTING INSTRUMENT, the INDEPENDENT VERIFIER shall issue its opinion within a maximum period of 5 (five) days.

**12.4.3.** Upon receipt of the opinion of the INDEPENDENT VERIFIER, the REVERTIBLE ASSETS LISTING INSTRUMENT shall be forwarded directly to the GRANTING AUTHORITY, which shall have a period of 10 (ten) days to approve it.

**12.4.4.** Once the REVERTIBLE ASSETS LISTING INSTRUMENT is approved by the GRANTING AUTHORITY, the list of REVERSIBLE ASSETS set forth therein shall become part of the INVENTORY, representing its update, in accordance with EXHIBIT C - FURNITURE AND EQUIPMENT SPECIFICATIONS and with items 13.1.29 and 54.5 of the AGREEMENT.

**12.5.** The CONCESSIONAIRE shall prepare the OPERATION PLAN and submit it to the analysis of the INDEPENDENT VERIFIER and to the review and approval of the GRANTING AUTHORITY, within the deadlines and under the conditions set forth in EXHIBIT B – SERVICES SPECIFICATIONS.

**12.5.1.** The OPERATION PLAN of the EDUCATIONAL UNITS shall be updated by the CONCESSIONAIRE in accordance with the guidelines set forth in EXHIBIT B – SERVICES SPECIFICATIONS.

### **13. APPENDIX**

Appendix I - Conceptual Design by Typology

Appendix II - Reference Macro Implementation Schedule

Appendix III - Investment Schedule

**PROCESS No. 1260.01.0235354/2025-76  
INTERNATIONAL TENDER No. 001/2026  
SCHOOL INFRASTRUCTURE PPP**

Appendix IV - Flowchart of the Phases and Stages of the Concession

Appendix V - Mapping of Educational Units for Contingent Investments